



August 22, 2025

## ADDENDUM NO. A

TO THE CONTRACT DOCUMENTS

**FOR**

Arrowhead Elementary School – Playground Improvements

**FOR THE**

San Bernardino City Unified School District  
777 North 'F' Street  
San Bernardino, CA 92410

DSA #04-124138      FILE #36-55      RCA Project No. 1-78-54

### NOTICE TO BIDDERS

This Addendum forms a part of the Contract and modifies the original documents of DSA Approved on July 23, 2025. It is intended that all work affected by the following modifications shall conform with related provisions and general conditions of the contract of the original drawings and specifications. Modify the following items wherever appearing in any drawing or sections of the specifications. Acknowledge receipt of Addendum No. A in the space provided on the Bid Form. Failure to do so may subject the bidder to disqualification.

### CHANGES TO THE SPECIFICATIONS

- |              |  |
|--------------|--|
| Item No. 1.1 | Reference Section 00 01 10 – Table of Contents   |
| 1.1.1        | Replace Specification Section in its entirety.   |
| Item No. 1.2 | Reference Section 11 68 33 – Athletic Field Equipment                                      |
| 1.2.1        | Revise per items listed below:   |
|              | (a) Remove Paragraph 2.03 in its entirety. Baseball Backstop do not apply to this project. |
| Item No. 1.3 | Reference Section 12 11 03 – Mural Painting and Faux Finishes                              |
| 1.4.1        | Add New Specification Section in its entirety.   |

### GENERAL INFORMATION (EXHIBIT)

- |              |   |
|--------------|---|
| Item No. 1.4 | Reference Graphics & Furniture Exhibit (dated August 2025)  |
|              | (a) Contractor to provide all playground graphics. Coordinate with Architectural Drawings and this exhibit.                                       |
|              | (b) Contractor to remove, salvage and reinstall all existing playground furniture. Coordinate final locations with school district & this exhibit |

### CHANGES TO THE DRAWINGS

ARCHITECTURAL

- Item No. 1.5      Reference Sheet G-2 – OVERALL SITE PLAN  
1.5.1      Replace Sheet G-2 and revise per clouded areas & items listed below:  
            (a)      Revised pavement/play surfacing graphics at both Kinder Play & Upper Grade Play
- Item No. 1.6      Reference Sheet G-3 – FIRE ACCESS SITE PLAN  
1.6.1      Replace Sheet G-3 and revise per clouded areas & items listed below:  
            (a)      Revised pavement/play surfacing graphics at both Kinder Play & Upper Grade Play
- Item No. 1.7      Reference Sheet AS-1.0 – ENLARGED DEMO & NEW SITE PLAN  
1.7.1      Replace Sheet AS-1.0 and revise per clouded areas & items listed below:  
            (a)      Detail 2, Revised pavement/play surfacing graphics
- Item No. 1.8      Reference Sheet AS-2.0 – ENLARGED DEMO & NEW SITE PLAN  
1.8.1      Replace Sheet AS-2.0 and revise per clouded areas & items listed below:  
            (a)      Detail 2, Revised pavement/play surfacing graphics
- Item No. 1.9      Reference Sheet ASD-1.1 – SITE DETAILS  
1.9.1      Replace Sheet ASD-1.3 and revise per clouded areas & items listed below:  
            (a)      Details 13, 14, 16, 19, 20, 23 & 25, Revised pavement/play surfacing graphics
- Item No. 1.10      Reference Sheet ASD-1.2 – SITE DETAILS  
1.10.1      Replace Sheet ASD-1.2 and revise per clouded areas & items listed below:  
            (a)      Remove detail 16 in its entirety

#### ATTACHMENTS

**Exhibits:**              Graphics & Furniture Exhibit (dated August 2025)

**Specifications:**    00 01 10, 12 11 03

**Sketches:**            N/A

**Sheets:**              G-2, G-3, AS-1.0, AS-2.0, ASD-1.1, ASD-1.2

#### END OF ADDENDUM NO. A

\_\_\_\_\_  
Roger Clarke, Principal  
C-21340



## **SECTION 00 01 10 TABLE OF CONTENTS**

### **PROCUREMENT AND CONTRACTING REQUIREMENTS**

#### **DIVISION 00 -- PROCUREMENT AND CONTRACTING REQUIREMENTS**

- 00 01 01 - Project Title Page
- 00 01 02 - Project Information
- 00 01 07 - Seals Page
- 00 01 10 - Table of Contents
- 00 40 25 - Request for Information
- 00 43 25 - Substitution Request Form - During Procurement
- 00 63 25 - Substitution Request Form - During Construction

**Addendum A**

### **SPECIFICATIONS**

#### **DIVISION 01 -- GENERAL REQUIREMENTS**

- 01 10 00 - Summary
- 01 20 00 - Price and Payment Procedures
- 01 25 00 - Substitution Procedures
- 01 30 00 - Administrative Requirements
  - 01 30 00.01 - Request for Interpretation
  - 01 30 00.02 - Submittal Transmittal
- 01 35 50 - Requests for Electronic Files
- 01 35 53 - Security Procedures
- 01 40 00 - Quality Requirements
- 01 41 00 - Regulatory Requirements
- 01 45 33 - Code-Required Special Inspections
- 01 50 00 - Temporary Facilities and Controls
- 01 60 00 - Product Requirements
- 01 61 16 - Volatile Organic Compound (VOC) Content Restrictions
  - 01 61 16.01 - Accessory Material VOC Content Certification Form
- 01 70 00 - Execution and Closeout Requirements
- 01 74 19 - Construction Waste Management and Disposal
- 01 78 00 - Closeout Submittals
  - 01 78 00.01 - Warranty Form Letter
- 01 78 39 - Project Record Documents

San Bernardino City Unified School District

**Arrowhead Elementary School Playground  
Improvements**

RCA Project No. 1-78-54

**Addendum A**

Table of Contents

00 01 10 - 1

01 79 00 - Demonstration and Training

**DIVISION 02 -- EXISTING CONDITIONS**

02 41 00 - Demolition

**DIVISION 03 -- CONCRETE**

03 10 00 - Concrete Forming and Accessories

03 20 00 - Concrete Reinforcing

03 30 00 - Cast-in-Place Concrete

**DIVISION 05 -- METALS**

05 50 00 - Metal Fabrications

**DIVISION 07 -- THERMAL AND MOISTURE PROTECTION**

07 92 00 - Joint Sealants

**DIVISION 12 -- FURNISHINGS**

**12 11 03 - Mural Painting and Faux Finishes (New Section)**

**Addendum A**

**DIVISION 13 -- SPECIAL CONSTRUCTION**

13 34 19.10 - Pre-Engineered Shade Shelter

**DIVISION 31 -- EARTHWORK**

31 10 00 - Site Clearing

31 22 00 - Grading

31 23 16 - Excavation

31 23 16.13 - Trenching

31 23 23 - Fill

31 63 29 - Drilled Concrete Piers and Shafts

**DIVISION 32 -- EXTERIOR IMPROVEMENTS**

32 11 20 - Subbase and Aggregate Base Courses

32 12 16 - Asphalt Paving

32 13 13 - Site Concrete

32 17 23 - Pavement Markings

32 18 16.13 - Playground Protective Surfacing

**END OF SECTION**



**SECTION 12 11 03**  
**MURAL PAINTING AND FAUX FINISHES**

**PART 1 GENERAL**

**1.01 SUMMARY**

- A. Specialty painting of mural by artisans.
- B. Mural to be painted on smooth trowel plaster, CMU, concrete, asphalt paving, and concrete paving on wall surfaces, where indicated on Drawings.
  - 1. Mural image to be provided by Architect or District.
- C. Painting of other building elements are specified in 09 91 13 - Exterior Painting and 09 91 23 - Interior Painting .
- D. Prepare and prime identified surfaces scheduled for paint.

**1.02 RELATED REQUIREMENTS**

- A. Section 01 61 16 - Volatile Organic Compound (VOC) Content Restrictions.
- B. Section 05 50 00 - Metal Fabrications: Shop-primed items.
- C. Section 09 91 13 - Exterior Painting; Painting of other building elements.
- D. Section 09 91 23 - Interior Painting; Painting of other building elements.
- E. Section 32 17 23 - Pavement Markings: Painted pavement markings.

**1.03 REFERENCE STANDARDS**

- A. PDCA P1 - Touch Up Painting and Damage Repair: Financial Responsibility and Definition of a Properly Painted Surface.
- B. PDCA Standards - PDCA Industry Standards, Painting Contractors Association.
- C. SSPC-SP 2 - Hand Tool Cleaning.
- D. SSPC-SP 3 - Power Tool Cleaning.
- E. SSPC-SP 6 - Commercial Blast Cleaning.
- F. SSPC-SP 7 - Brush-Off Blast Cleaning.

**1.04 DEFINITIONS**

- A. System DFT: Dry film thickness of entire coating system unless otherwise noted.

**1.05 SUBMITTALS**

- A. General: Submit in accordance with Section 01 30 00 - Administrative Requirements.
- B. Product Data:
  - 1. Submit product data, including label analysis for each product proposed for use.
  - 2. Specifically include percent solids-by-volume, volatile organic compound (VOC) content in g/L, and lead content (percent of weight of dried film).

- C. Mural Shop Drawing: Scaled rendering with true representation of color and content placement.
- D. Color and Sheen Samples:
  - 1. Prepare multiple samples of each opaque finish coating specified in each color and sheen scheduled for appearance verification.
  - 2. Apply to 1/4 inch hardboard. Apply sufficient coating thickness to provide proper hiding and appearance.
  - 3. Label each sample to indicate material, color, and sheen.
  - 4. Mural: 24 by 24 inches, two different scenes - all colors and sheen.
- E. Submit following Informational Submittals:
  - 1. Certifications specified in Quality Assurance article.
  - 2. Qualification Data: Applicator's qualification data.
  - 3. Manufacturer's instructions.
- F. Closeout Submittals:
  - 1. Submit under provisions of Section 01 70 00 - Execution and Closeout Requirements.
  - 2. Warranty: Submit specified warranty.

#### **1.06 QUALITY ASSURANCE**

- A. Comply with PDCA Standards.
- B. Single Source Responsibility:
  - 1. Provide products of single manufacturer for use in each coating system.
  - 2. Do not mix products of different manufacturers without approval of Architect or Owner Representative and manufacturers involved.
  - 3. Provide manufacturer recommended materials (base and tints) for deep tone colors.
- C. Applicator Qualifications:
  - 1. Company specializing in commercial painting and finishing with 3 years documented experience.
  - 2. Employ artisans with specialized training and abilities for Mural and plaster painting.

#### **1.07 FIELD SAMPLES**

- A. General: Comply with requirements of Section 01 40 00 - Quality Requirements.
- B. Sample Installation: Duplicate finishes of approved coating system samples on wall surfaces and other interior and exterior components selected by Agency.
- C. Provide full-coat finish on at least 10 sq. ft. of surface until required color, sheen, and texture are obtained. Simulate finished lighting conditions for review of in-place work.

#### **1.08 DELIVERY, STORAGE, AND HANDLING**

- A. Deliver products to site in manufacturer's sealed and labeled containers; inspect to verify compliance with specified requirements.

- B. Label containers to indicate manufacturer's name, product name and type of coating, brand code or stock number, date of manufacture, coverage, surface preparation, drying time, cleanup, color designation and instructions for mixing and reducing.
- C. Store coating materials in tightly covered containers in well ventilated area at ambient temperatures of 45 degrees F minimum and 90 degrees F maximum, unless required otherwise by manufacturer. Maintain containers in clean condition, free of foreign materials and residue with labels in legible condition.
- D. Take precautionary measures to prevent fire hazards and spontaneous combustion.

#### **1.09 PROJECT CONDITIONS**

- A. Environmental Conditions: Comply with more restrictive of following or manufacturer's requirements under which systems can be applied.
  - 1. Do not apply coatings under any of following conditions:
    - a. When surfaces are damp or wet.
    - b. When relative humidity is less than 20 percent or exceeds 85 percent.
    - c. When temperature is less than 5 degrees F above dew point.
    - d. When dust may be generated before coatings have dried.
    - e. In direct sunlight.
    - f. When wind velocity is above 20 mph.

#### **1.10 WARRANTY**

- A. Comply with provisions of Section 01 78 00 - Closeout Submittals.
- B. Warrant installation to be free from defects in material and workmanship for 5 years.
- C. Repair or replace defects occurring during warranty period.
- D. Defects include but are not limited to pinholes, crazing or cracking, loss of adhesion to substrate, deficient thickness, improper materials and workmanship.

#### **1.11 EXTRA STOCK MATERIAL**

- A. Provide one unopened gallon container of each type of opaque top coating in each color and sheen used on Project.
- B. Store where directed with labels intact.

### **PART 2 PRODUCTS**

#### **2.01 SYSTEM REQUIREMENTS**

- A. Interface with Adjacent Systems:
  - 1. Review other Sections specifying prime coats to ensure compatibility of total coating system for various substrates.
  - 2. Upon request from other trades, furnish information on characteristics of finish materials proposed for use to ensure compatibility of various coatings.

3. Test compatibility of existing coatings, including shop applied primers and previously applied coatings, by applying specified special coating to small, inconspicuous area.
4. If specified coating lifts or blisters existing coating, apply barrier or tie coat as recommended by coating manufacturer.
5. If no compatible barrier or tie coat exists, remove existing coating completely and apply coating system as specified for new work.

## **2.02 COATING MATERIALS - GENERAL**

- A. Coatings:
  1. Ready-mixed, factory tinted, best professional grade produced by manufacturer.
  2. Use manufacturer's appropriate base materials to achieve required colors.
  3. Fully grind pigments to maintain soft paste consistency in vehicle.
  4. Capable of being dispersed into uniform, homogeneous mixture.
  5. Possess good flowing and brushing properties.
  6. Capable of drying or curing free of streaks or sags, and yielding specified finish.
  7. VOC content of field applied coatings shall comply with local governing authorities.

## **2.03 FINISH COATINGS SCHEDULE**

- A. See Section 09 91 13 - Exterior Painting, 09 91 23 - Interior Painting, and 32 17 23 - Pavement Markings.
- B. Exterior Coating Systems:
  1. Concrete and Plaster Surfaces:
    - a. System Paint GE-OP-3L - Exterior Gypsum Board and Exterior Plaster, Opaque, Latex:
      - 1) Prime Coat: Alkali Resistant Primer at 1.5 mils.
      - 2) Under Coat: Exterior Latex House Paint at 1.5 mils.
      - 3) Top Coat: Exterior Latex House Paint at 1.5 mils.
      - 4) System DFT: 3.0 mils.
  2. Metal Surfaces:
    - a. Non-Ferrous Metals and Zinc-Coated (Galvanized) Steel.
      - 1) System No. EM-2 (Latex Finish):
        - (a) Prime Coat: Galvanized Primer at 2.0 mils.
        - (b) Under Coat: Industrial Acrylic at 3.0 mils.
        - (c) Top Coat: Industrial Acrylic at 3.0 mils.
        - (d) System DFT: 8.0 mils.
    - b. Ferrous Metals - Uncoated:
      - 1) System Paint ME-OP-3L - Ferrous Metals, Unprimed, Latex, 3 Coat:
        - (a) Prime Coat: Alkyd-Phenolic Primer at 2.5 mils.
        - (b) Under Coat: Industrial Acrylic at 2.5 mils.
        - (c) Top Coat: Industrial Acrylic at 2.5 mils.

- (d) System DFT: 7.5 mils.
- c. Ferrous Metals - Previously Coated:
  - 1) System Paint ME-OP-2L - Ferrous Metals, Primed, Latex, 2 Coat:
    - (a) Prime Coat: Touch-up existing with compatible primer.
    - (b) Under Coat: Industrial Acrylic at 2.5 mils.
    - (c) Top Coat: Industrial Acrylic at 2.5 mils.
    - (d) System DFT: 5.0 mils (excluding existing and touch-up primer).

## **2.04 COLOR SCHEDULE**

- A. Colors and sheen are indicated on Drawings.

## **2.05 PRIME COATINGS**

- A. See Section 09 91 13 - Exterior Painting, 09 91 23 - Interior Painting, and 32 17 23 - Pavement Markings,

## **2.06 FINISH COATING PRODUCTS**

- A. See Section 09 91 13 - Exterior Painting, 09 91 23 - Interior Painting, and 32 17 23 - Pavement Markings.

## **2.07 ACCESSORY MATERIALS**

- A. Muriatic acid, mildewcide, TSP (tri-sodium phosphate), acidic-detergent, zinc sulfate, sodium metasilicate, and solvent: Commercially available, non-damaging to surface being cleaned; as specified in PDCA P1; acceptable to coating manufacturer.
- B. Metal Conditioner: Proprietary phosphoric acid based, etching type solution; acceptable to coating manufacturer.
- C. Rust Inhibitor: Water containing 0.32 percent of sodium nitrite and 1.28 percent by weight of secondary ammonium phosphate (dibasic); or water containing 0.2 percent by weight of chromic acid or sodium chromate or sodium dichromate or potassium dichromate.
- D. Spackling compound, putty, plastic wood filler, liquid de-glosser, latex patching plaster, latex base filler, thinners, and other materials not specifically indicated but required to achieve finishes specified: Pure, of highest commercial quality, compatible with coatings and acceptable to coating manufacturer.
- E. Do not use products of different manufacturers in combination.

## **2.08 MIXING**

- A. Use factory prepared colors matching approved samples. Site tinting will not be permitted.
- B. Thoroughly mix and stir coatings before use to ensure homogeneous dispersion of ingredients. Prior to application, blend multiple containers of same material and color by pouring from one container to another several times to ensure uniform consistency, color, and smoothness.
- C. Mix only in clean mixing pails of material recommended by manufacturer to avoid contamination.

- D. Remove film which may form on surface of material in containers and strain material before using. Stir frequently during use to maintain pigments in suspension. Do not stir film into material.
- E. Apply coatings of consistency recommended by manufacturer. Thin only within recommended limits using thinners approved by coating manufacturer.

## **PART 3 EXECUTION**

### **3.01 EXAMINATION**

- A. Examine conditions and proceed with work when conditions are acceptable. Beginning work shall indicate acceptance of substrates and underlying conditions.
- B. Measure moisture content of substrates using recently calibrated electronic moisture meter.
  - 1. Concrete and Plaster: 17 percent.
  - 2. Do not apply coatings if moisture content of surfaces exceeds lesser of percentages listed below or those required by coating manufacturer.
  - 3. If excess moisture content exists and cannot be reduced, obtain written approval of coating manufacturer before application of coatings.
- C. Prior to applying alkali and acid sensitive coatings, test surface pH with universal pH paper placed against wetted surface. Substrate pH shall not exceed pH of clean wash water.
- D. Beginning of execution constitutes acceptance of existing conditions.

### **3.02 PREPARATION - GENERAL**

- A. Protect completed construction from damage. Furnish drop cloths, shields, and protective methods to prevent spray, splatter, or droppings from disfiguring other surfaces.
- B. Before beginning application of coatings, ensure surfaces are clean, dry, and free of dirt, dust, rust or rust scale, oil, grease, mold, mildew, algae, efflorescence, release agents, or any other foreign material which could adversely affect coating adhesion or finished appearance.

### **3.03 SURFACE PREPARATION FOR NEW WORK**

- A. General:
  - 1. Correct minor defects.
  - 2. Remove temporary labels, wrappings, and protective coverings from surfaces to be coated.
  - 3. Seal stains, marks, and other imperfections which may bleed through surface finishes.
- B. Plaster:
  - 1. Allow surfaces to cure and dry completely prior to application of coatings; minimum of 28 days.
  - 2. Remove dirt, efflorescence, scale, loose sand, and powder by wire brushing or by other approved methods.
  - 3. Remove oil and grease with solution of TSP, rinse, and allow to dry.
  - 4. Wash portland cement plaster to receive solvent reducible coatings with zinc sulfate solution, rinse, and allow to dry.

San Bernardino City Unified School District

**Arrowhead Elementary School Playground  
Improvements**

Addendum A

Mural Painting and Faux Finishes

12 11 03 - 6

RCA Project No. 1-78-54

5. Fill hairline cracks, small holes and imperfections with latex patching plaster. Make smooth and flush with adjacent surfaces.
- C. Steel - Uncoated:
1. Remove weld spatter by chipping or grinding.
  2. Clean interior and weather protected steel in accordance with SSPC-SP 2 and SSPC-SP 3. Clean areas of excessive corrosion or scale in accordance with SSPC-SP 7.
  3. Clean exterior steel permanently exposed to elements in accordance with SSPC-SP 6.
  4. Apply metal conditioner to bare surfaces in accordance with manufacturer's recommendations, paying particular attention to abrasions, welds, bolts, and nuts.
    - a. Allow to set as recommended by solution manufacturer.
    - b. Rinse with clean water with rust inhibitor mixed with water or applied immediately following rinse.
    - c. Allow to dry.
  5. Prime coat immediately.
- D. Steel - Prime Coated:
1. Remove loose primer and rust to feather-edge at adjacent sound primer by cleaning in accordance with SSPC-SP 2 and SSPC-SP 3.
  2. Apply metal conditioner to abrasions, welds, bolts, and nuts in accordance with manufacturer's recommendations.
    - a. Allow to set as recommended by manufacturer.
    - b. Rinse with clean water with rust inhibitor mixed with water or applied immediately following rinse.
    - c. Allow to dry.
  3. Prime coat bare areas immediately.
  4. Apply specified primer to bare steel and previously primed steel surfaces including steel stair stringers and metal fabrications.
- E. Steel - Galvanized:
1. Remove white rust by cleaning in accordance with SSPC-SP 2 and SSPC-SP 3. Exercise care not to remove galvanizing.
  2. Pretreat surfaces to receive solvent reducible coatings immediately.

### **3.04 APPLICATION**

- A. General Requirements:
1. Prepare and apply pavement coatings per the manufacturer.
  2. Coat all surfaces specified, scheduled, illustrated, and otherwise exposed unless specifically noted otherwise.
  3. Apply coatings of type, color, and sheen as selected.
  4. Apply products in accordance with Division 01. Use application materials, equipment, and techniques as recommended by coating manufacturer and best suited for substrate and type of material being applied.

5. Do not apply finishes to surfaces that are improperly prepared.
  6. Number of coats specified are minimum number acceptable.
  7. Apply coating systems to total dry film thickness scheduled.
    - a. Apply material at not less than manufacturer's recommended spreading rate.
    - b. Do not exceed maximum single coat thickness recommended by coating manufacturer.
    - c. Do not double-back with spray equipment building up film thickness of two coats in one pass.
  8. Ensure that edges, corners, crevices, welds, and exposed fasteners receive dry film thickness equivalent of flat surfaces.
  9. Finish edges of coatings adjoining other materials or colors sharp and clean, without overlapping.
- B. Prime Coats:
1. Apply initial coat to surfaces as soon as practical after preparation and before subsequent surface deterioration.
  2. Backprime exterior woodwork with specified primer.
  3. Backprime interior woodwork scheduled to receive transparent finish with gloss varnish reduced 25 percent with mineral spirits.
  4. Apply primer to wood and metal sash before field glazing.
- C. Intermediate and Top Coats:
1. Allow previously applied coat to dry before next coat is applied.
  2. Sand and dust lightly between coats as recommended by coating manufacturer.
  3. Apply each coat to achieve uniform finish, color, appearance, and coverage free of brush and roller marks, runs, misses, visible laps or shadows, hazing, bubbles, pin holes, or other defects.
  4. If stains, undercoats, or other conditions show through final topcoat, correct defects and apply additional topcoats until coating film is of uniform finish, color, and appearance.
- D. Finish Matching:
1. Finish closets same as adjoining rooms, unless otherwise specified.
  2. Finish tops, bottoms, and edges of doors same as door faces.
    - a. Apply sanding sealer to cut-outs.
    - b. When faces are different colors, finish edges of doors to match space from which they are visible when door is in partly open position.
  3. Finish other surfaces not specifically mentioned to match adjoining surfaces.
- E. Reinstall trim, fittings, and other items removed for finishing.

### **3.05 FIELD QUALITY CONTROL**

- A. General: Comply with requirements of Section 01 40 00 - Quality Requirements.



- B. Periodically test film thickness of each coat with wet film gage to ensure coatings are being applied to proper thickness.
- C. Request review of each applied coat by Architect before application of successive coats. Only reviewed coats will be considered in determining number of coats applied.
- D. Immediately prior to Substantial Completion, perform detailed inspection of painted surfaces and repair or refinish abraded, stained, or otherwise disfigured surfaces.

### **3.06 CLEANING**

- A. Promptly remove spilled, splashed, or spattered coatings. Clean spots, oil, and other soiling from finished surfaces using cleaning agents and methods which will not damage materials.
- B. If completed construction is damaged beyond normal cleaning or repair by painting operations, replace damaged items at no additional cost to Agency.
- C. Maintain premises and storage areas free of unnecessary accumulation of tools, equipment, surplus materials, and debris.
- D. Collect waste, cloths, and material which may constitute fire hazards and place in closed metal containers; remove from site daily along with empty containers.

### **3.07 PROTECTION**

- A. Protect finished work in accordance with Division 01.
- B. Protect work of other trades against damage from coating activities. Correct damage by cleaning, repairing, replacing, and recoating as acceptable to Architect.
- C. Provide "Wet Paint" signs and other methods to protect newly coated surfaces. Remove when directed or when no longer needed.

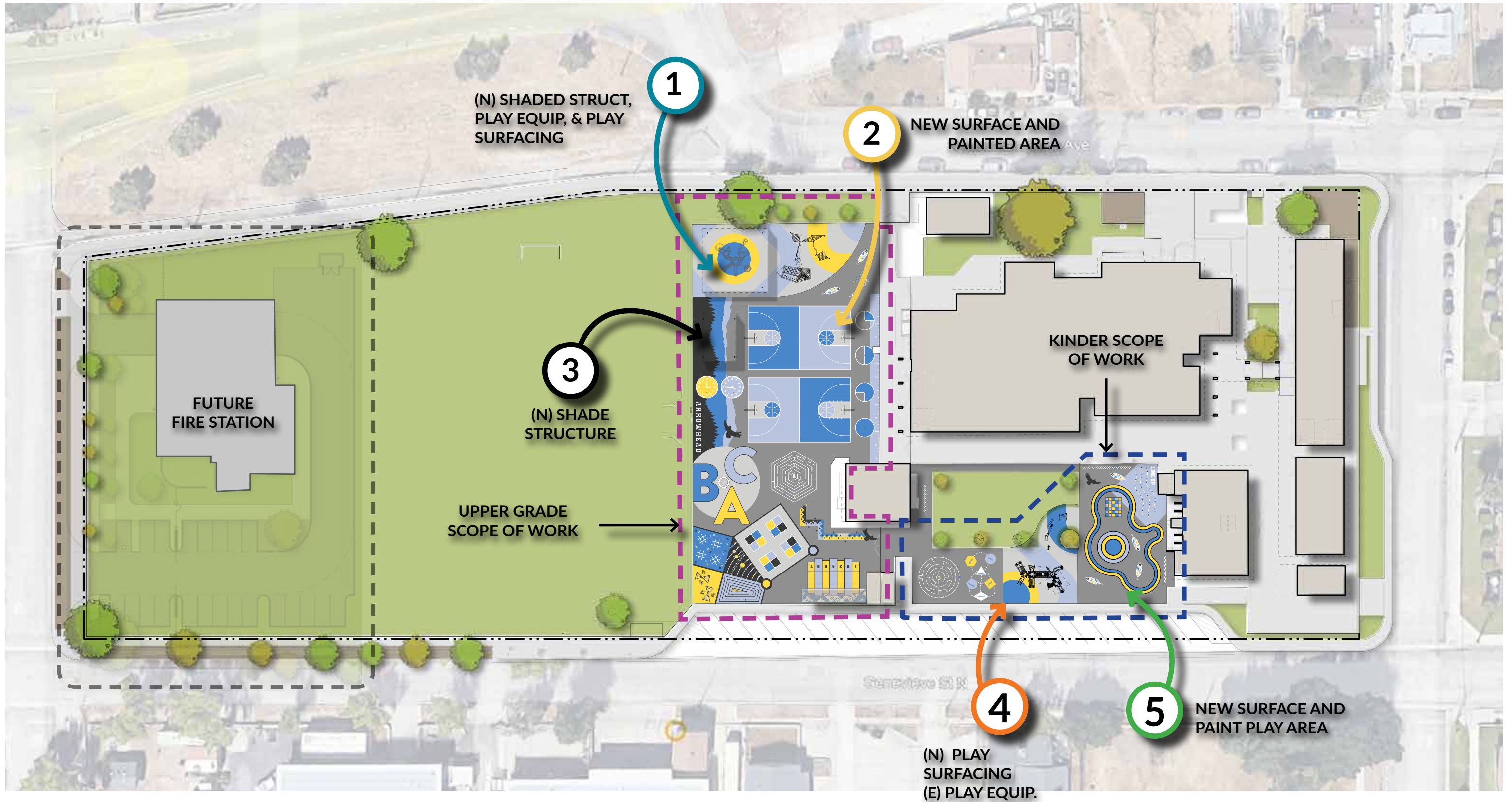
## **END OF SECTION**





# arrowhead elementary school





# CONCEPT SITE PLAN

## ARROWHEAD ELEMENTARY

SAN BERNARDINO CITY UNIFIED SCHOOL DISTRICT | RCA #1-78-54

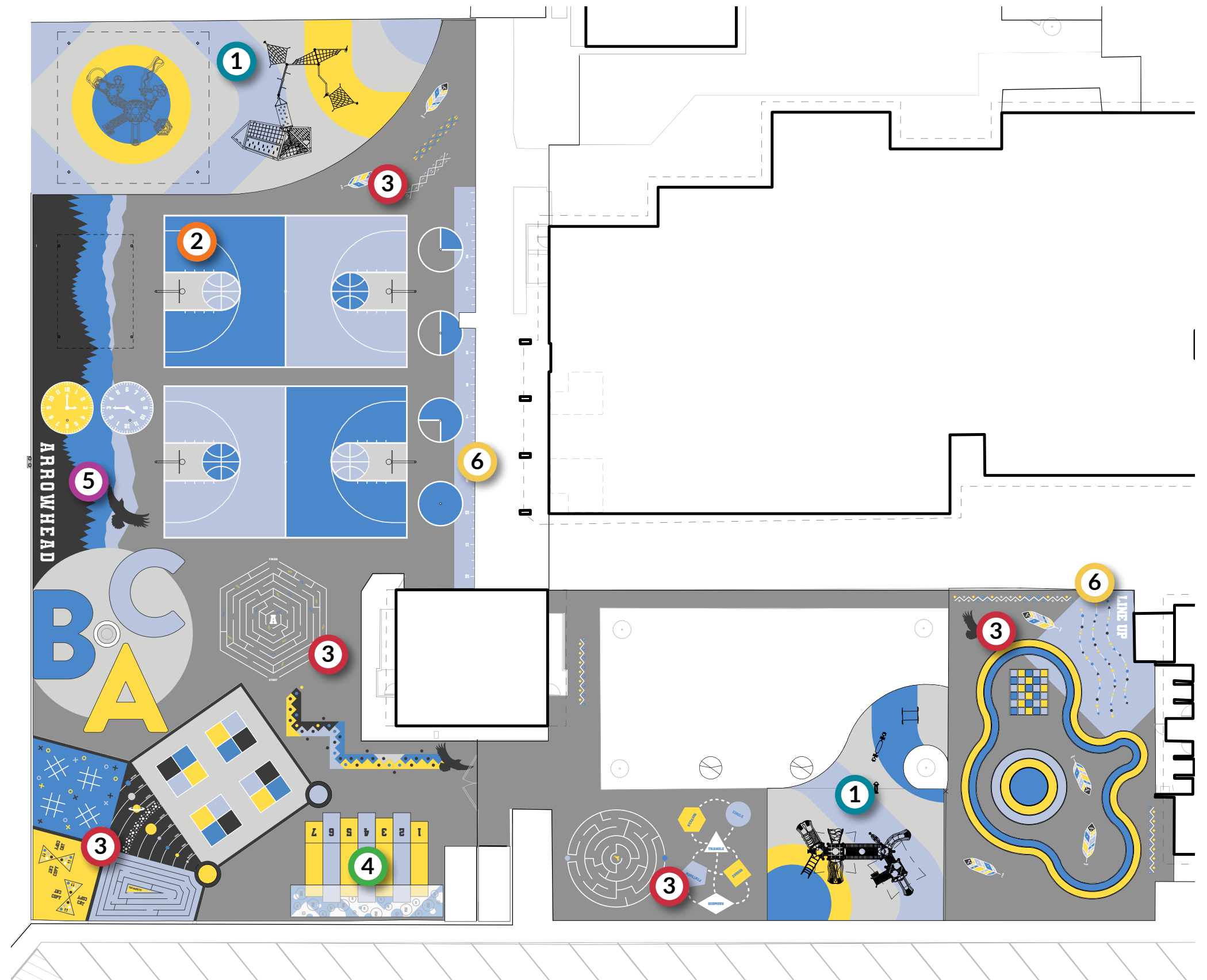
SCALE: 1:60



## PLAYGROUND IMPROVEMENTS – DESIGN UPDATE

AUGUST 2025

- 1 Play Surfacing
- 2 Basketball Courts
- 3 Painted Ground Games
- 4 Storage Container Game
- 5 School Spirit Graphic
- 6 Line-Up Area



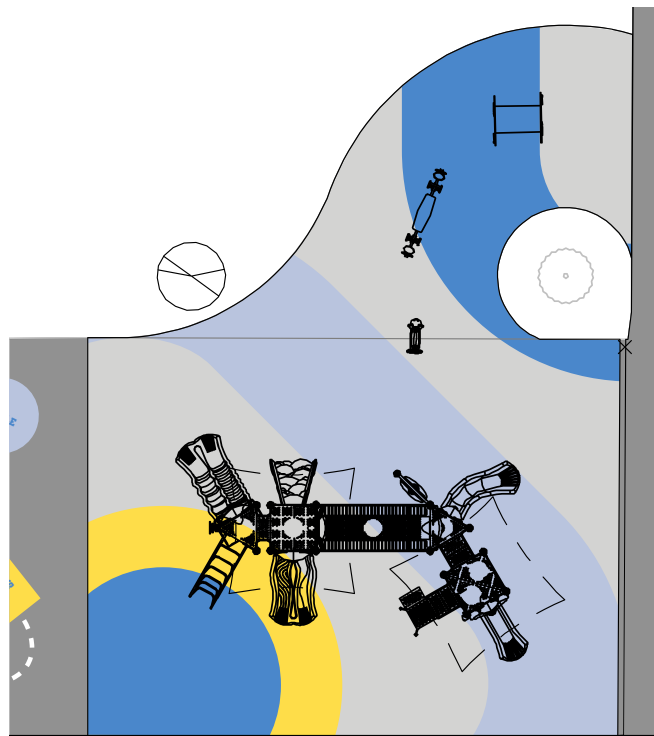
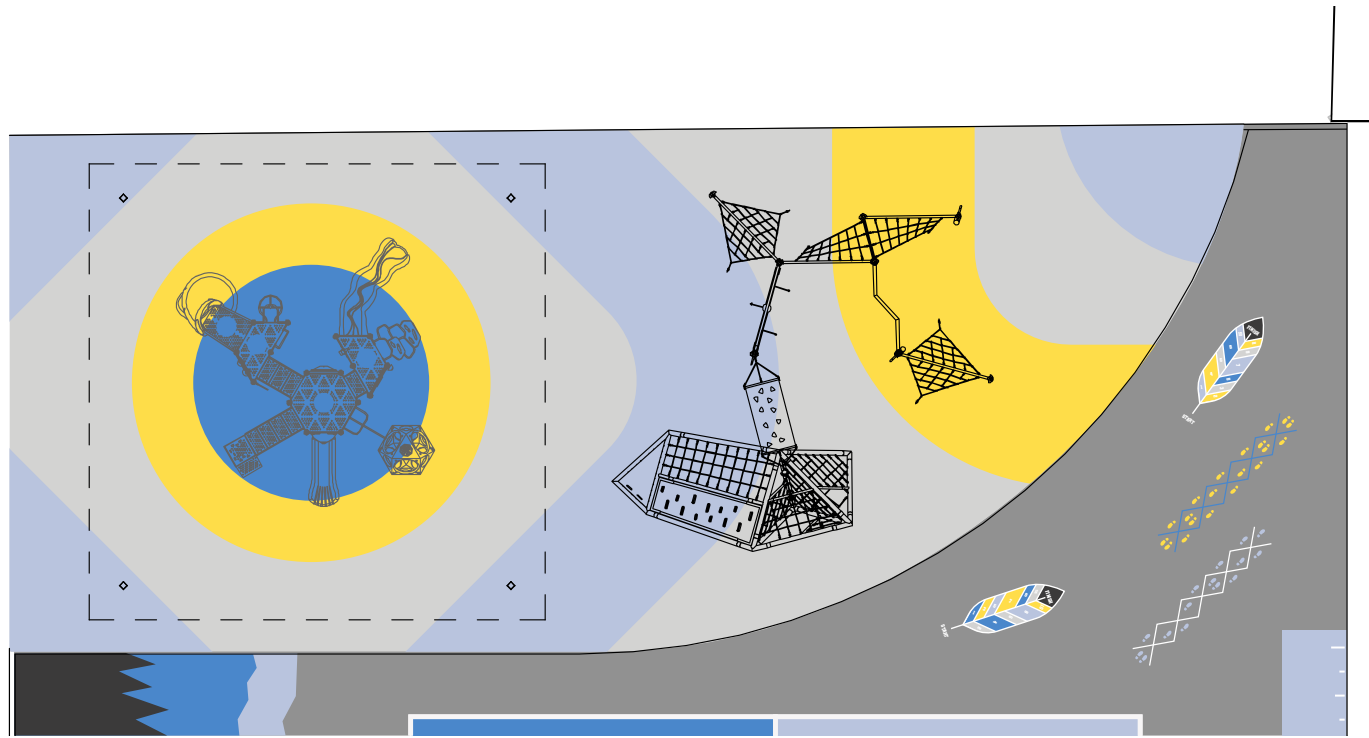
## PLAYGROUND PAINTED GRAPHICS – KEY

### ARROWHEAD ELEMENTARY

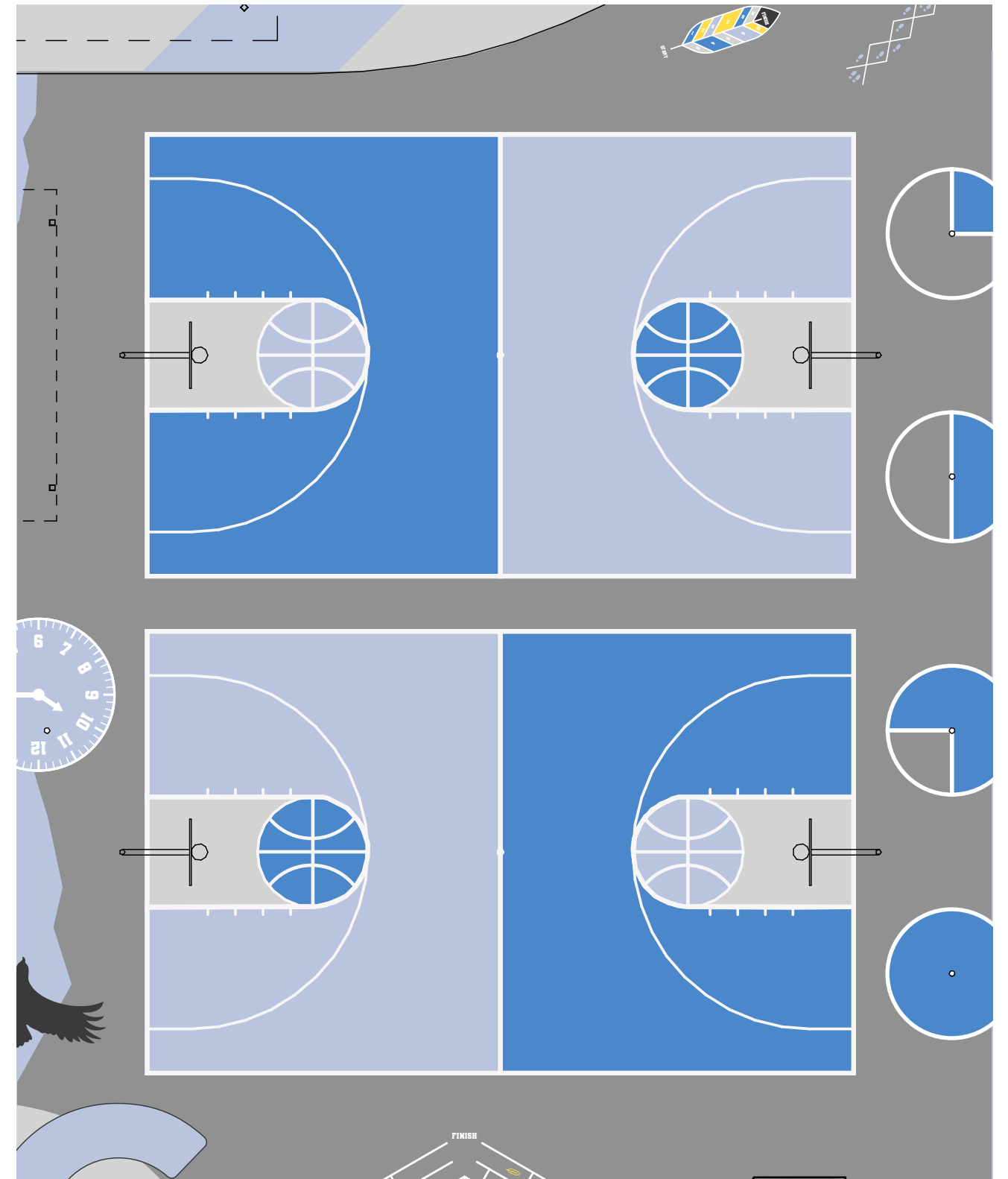
SAN BERNARDINO CITY UNIFIED SCHOOL DISTRICT | RCA #1-78-54

### PLAYGROUND IMPROVEMENTS – DESIGN UPDATE

AUGUST 2025



1 Play Surfacing



2 Basketball Courts

## PLAYGROUND PAINTED GRAPHICS – DETAILS

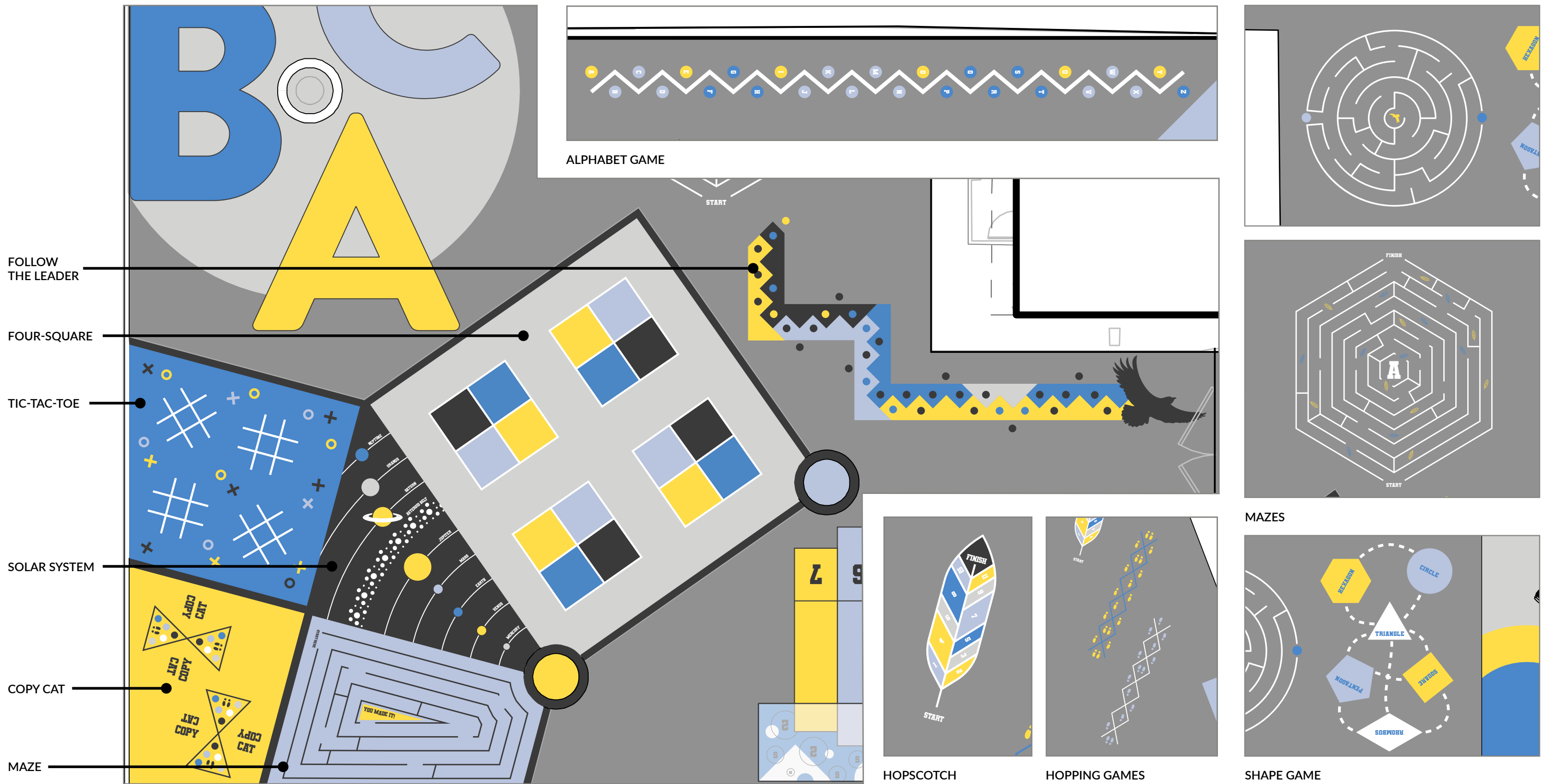
ARROWHEAD ELEMENTARY

SAN BERNARDINO CITY UNIFIED SCHOOL DISTRICT | RCA #1-78-54

PLAYGROUND IMPROVEMENTS – DESIGN UPDATE

AUGUST 2025





### 3 Painted Ground Games

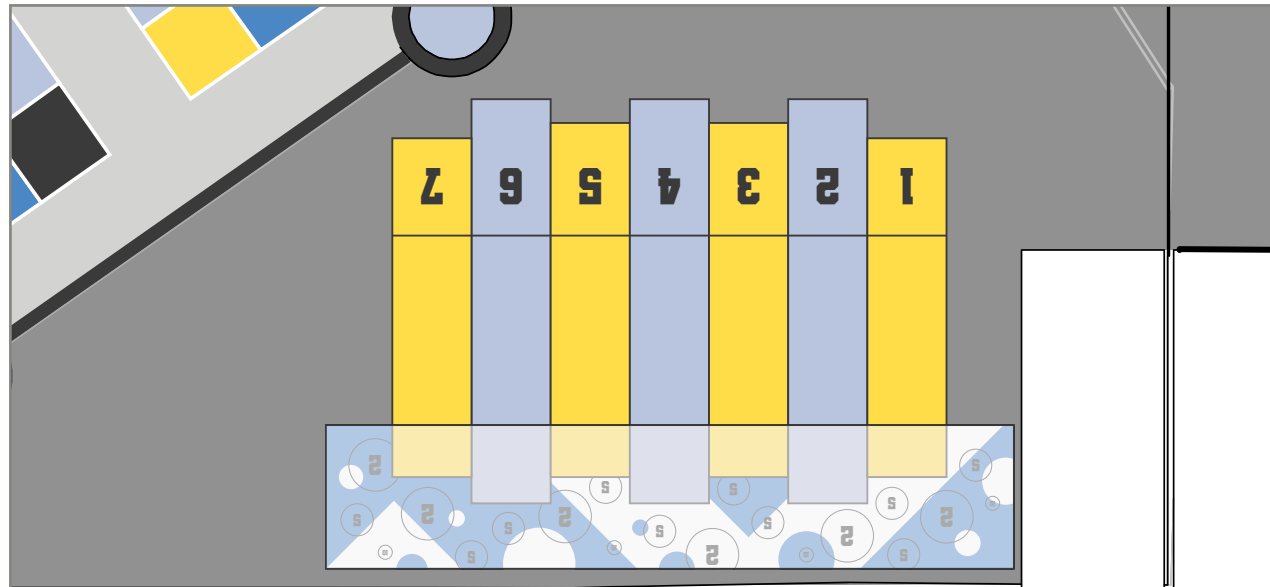
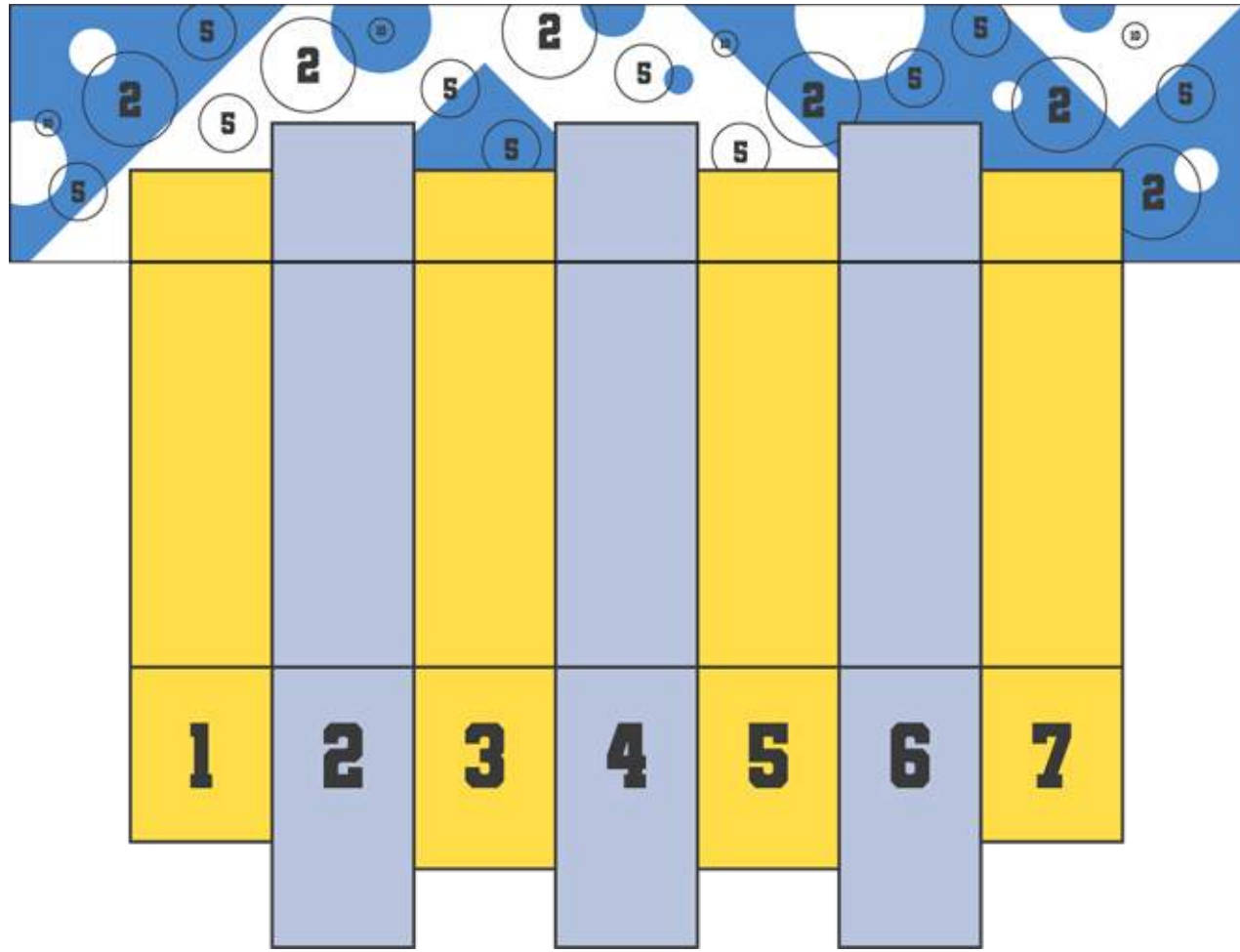
## PLAYGROUND PAINTED GRAPHICS – DETAILS

ARROWHEAD ELEMENTARY

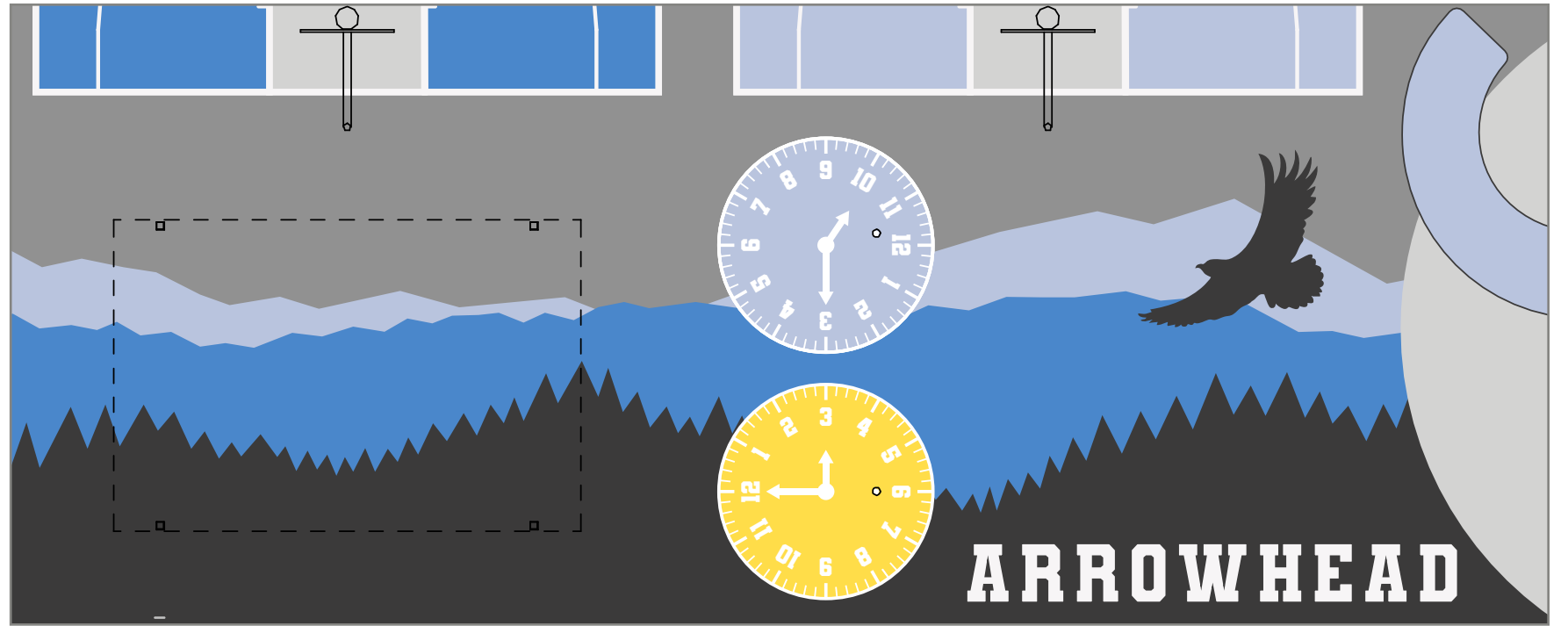
SAN BERNARDINO CITY UNIFIED SCHOOL DISTRICT | RCA #1-78-54

PLAYGROUND IMPROVEMENTS – DESIGN UPDATE

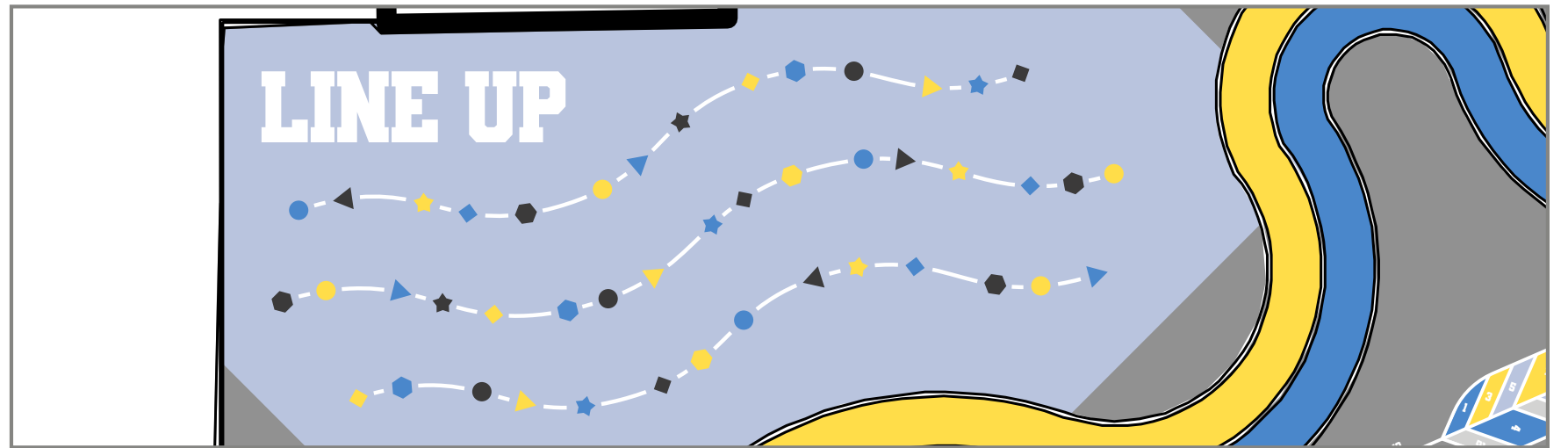
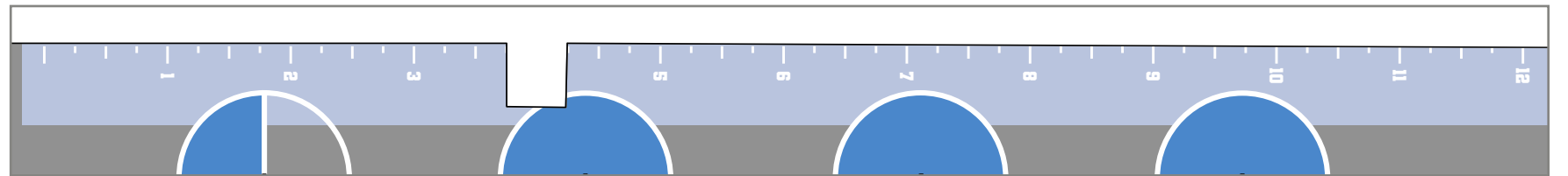
AUGUST 2025



4 Storage Container Game



5 School Spirit Graphic



6 Line-Up Areas

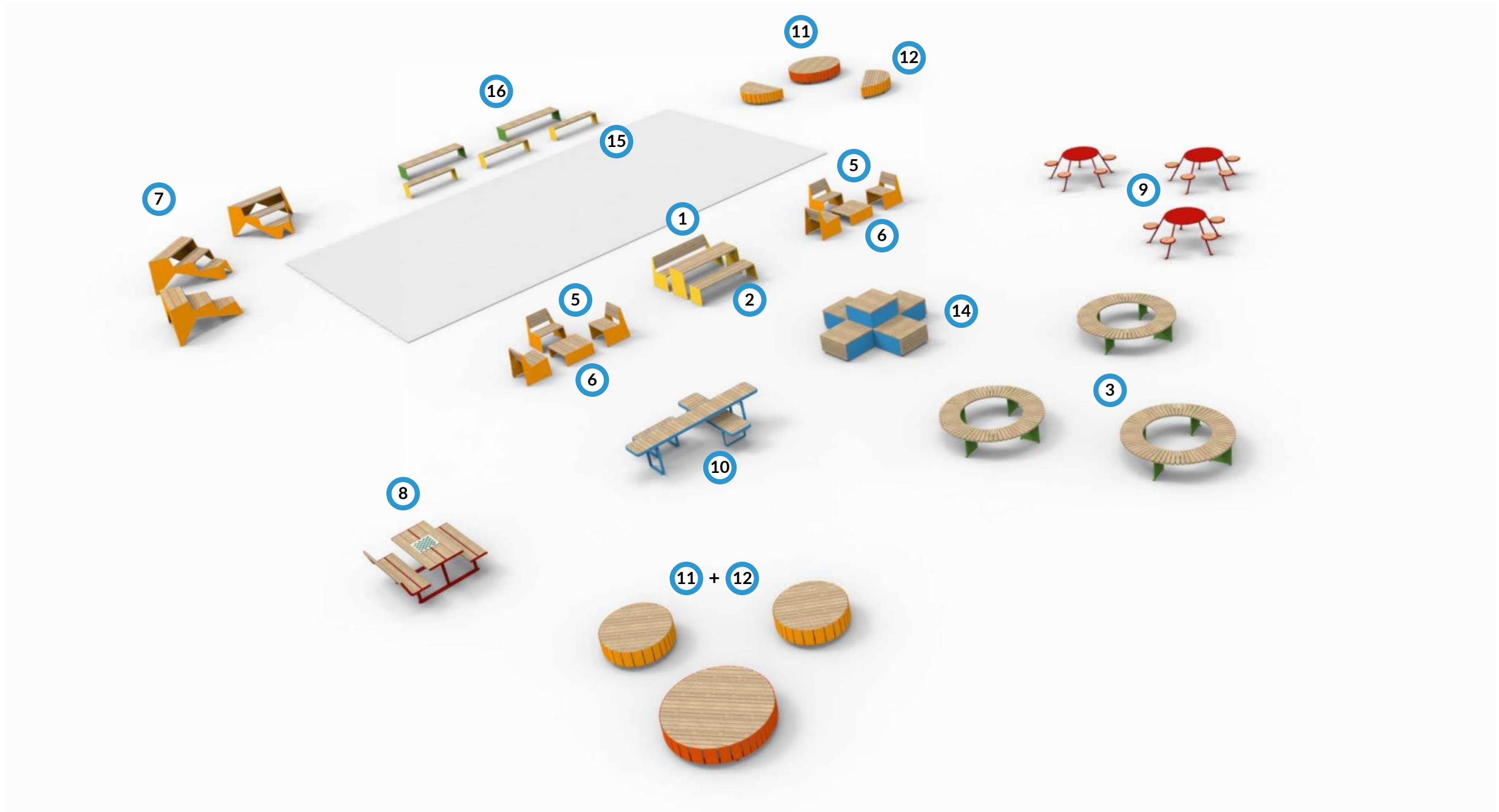
## PLAYGROUND PAINTED GRAPHICS – DETAILS

ARROWHEAD ELEMENTARY

SAN BERNARDINO CITY UNIFIED SCHOOL DISTRICT | RCA #1-78-54

PLAYGROUND IMPROVEMENTS – DESIGN UPDATE

AUGUST 2025



# EXTERIOR LEARNING FURNITURE

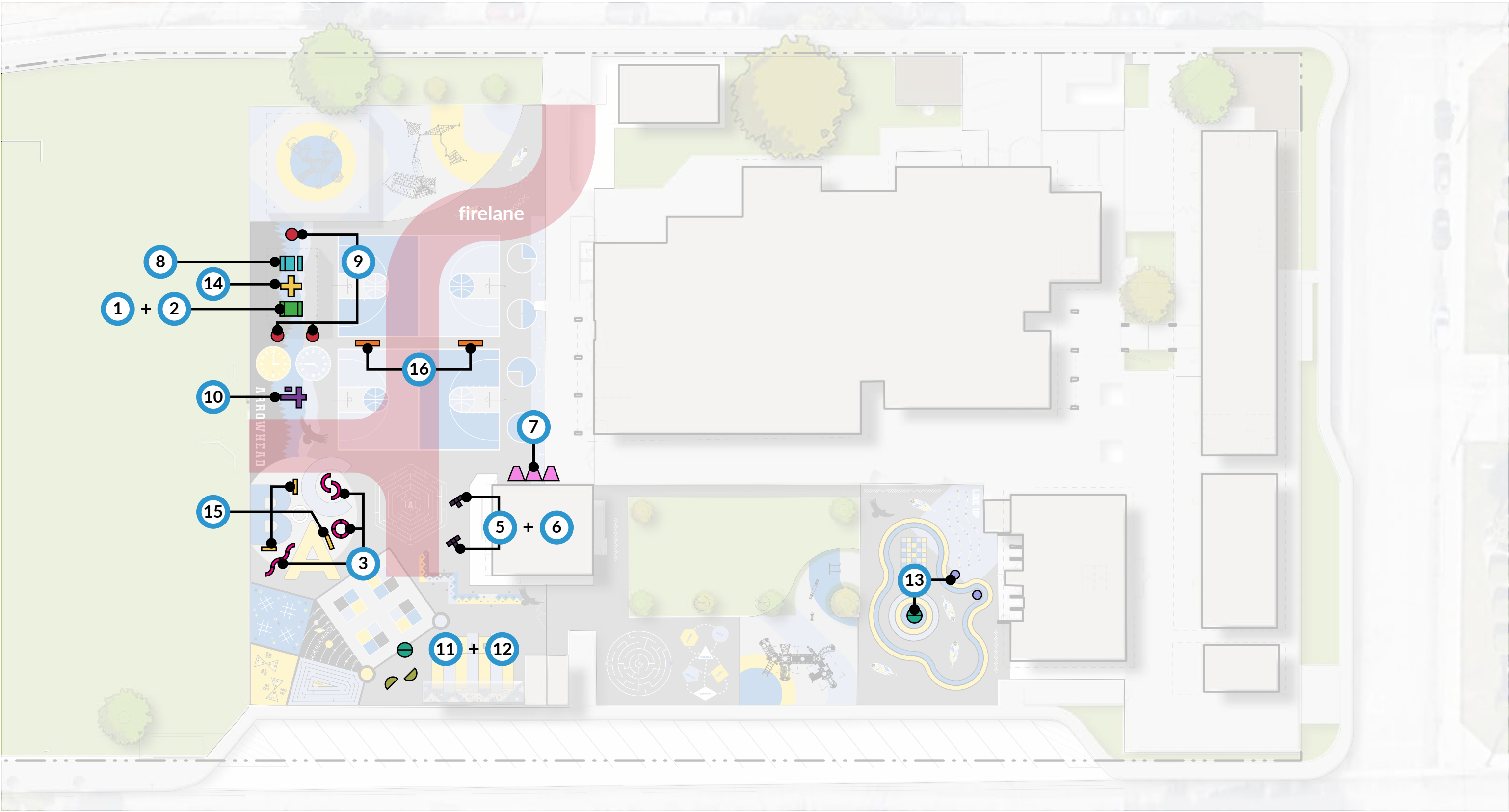
ARROWHEAD ELEMENTARY

SAN BERNARDINO CITY UNIFIED SCHOOL DISTRICT | RCA #1-78-54


PLAYGROUND IMPROVEMENTS – DESIGN UPDATE

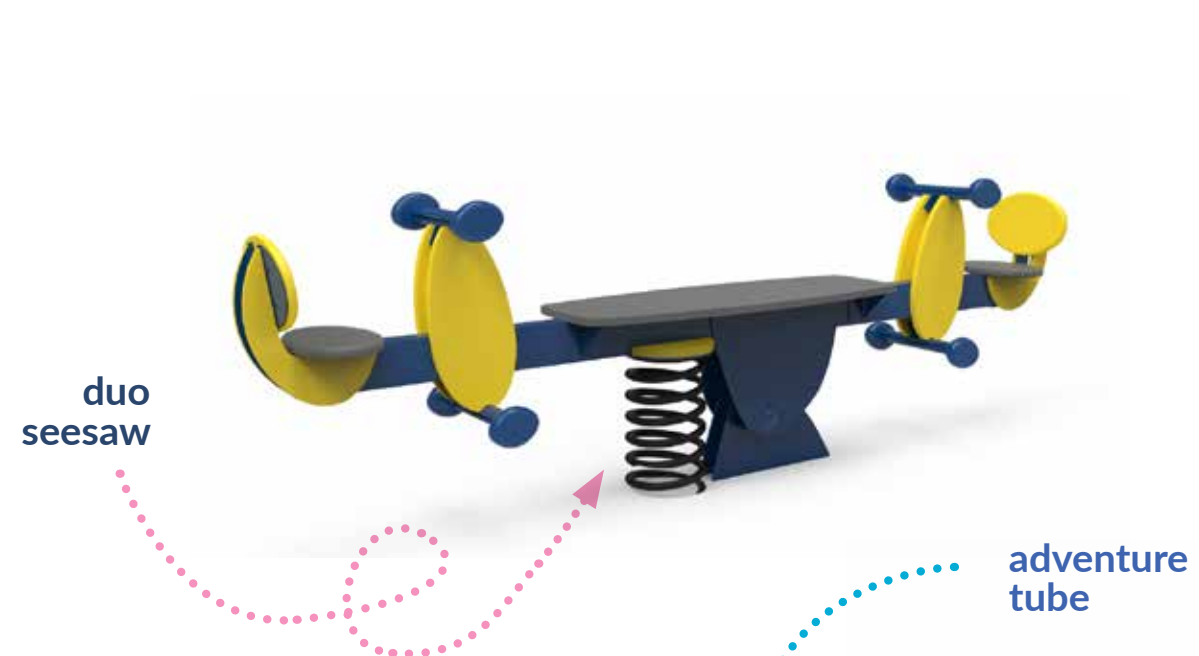
AUGUST 2025





FURNITURE LAYOUT

SCALE: 1:60 



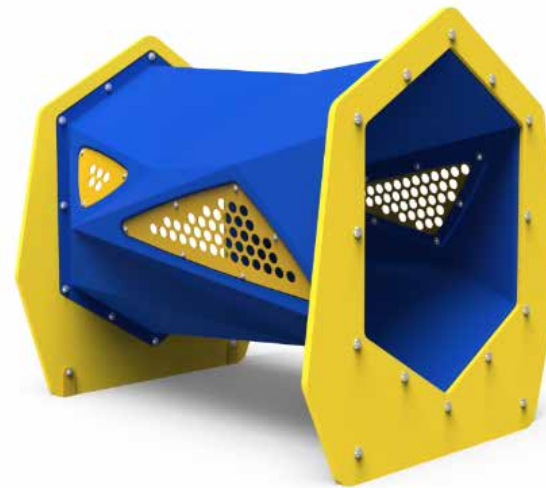
(n) kinder  
integrated shades

(e) kinder  
play structure

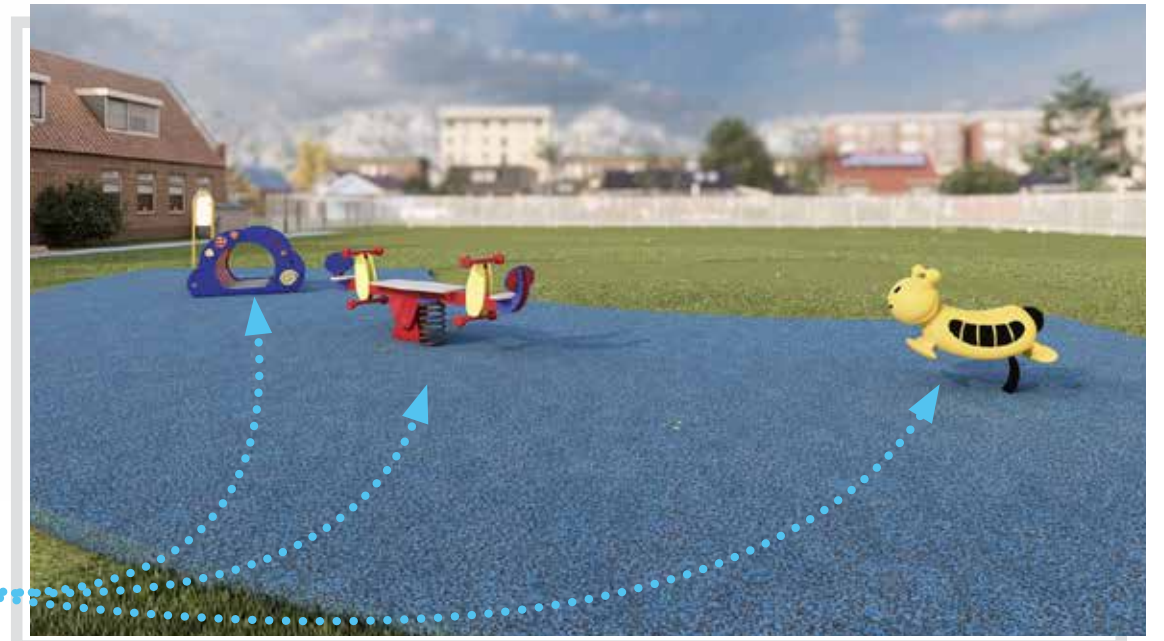


bee spring  
rider

adventure  
tube



(n) kinder single play



## NEW KINDER PLAY EQUIPMENT

ARROWHEAD ELEMENTARY

SAN BERNARDINO CITY UNIFIED SCHOOL DISTRICT | RCA #1-78-54

PLAYGROUND IMPROVEMENTS – DESIGN UPDATE

AUGUST 2025



(n) upper grade shelter & equipment



(n) play equipment



(n) shelter location



# UPPER PLAYGROUND UPGRADES

## ARROWHEAD ELEMENTARY

SAN BERNARDINO CITY UNIFIED SCHOOL DISTRICT | RCA #1-78-54

## PLAYGROUND IMPROVEMENTS – DESIGN UPDATE

AUGUST 2025



SAFE DISPERSAL AREA CALCULATION

BUILDING/STRUCTURE	BLDG. / STRUCT. AREA	TOTAL OCCUPANTS	DISPERSAL AREA REQ'D (OCC. X SF)	DISPERSAL AREA PROVIDED
(N) METAL SHADE STRUCTURE #1	1,600 SF	1,600 SF / 20 OLF = 80 OCC.	80 OCC. X 5 SF = 400 SF	2,100 SF TOTAL
(N) METAL SHADE STRUCTURE #2	600 SF	600 SF / 20 OLF = 30 OCC.	30 OCC. X 5 SF = 150 SF	

NOTE:  
PROVIDE SAFE DISPERSAL SIGNAGE, PER DETAIL 8 ASD-1.2

(E) CONDITION OF ALL DOORS AND GATES WITHIN POT ROUTE HAVE BEEN FIELD VERIFIED BY AOR AND ARE COMPLIANT WITH CURRENT CODE PER 11B-404 AS FOLLOW NOTES:

- THE CLEAR OPENING WIDTH FOR A DOOR SHALL BE 32 INCHES MINIMUM. FOR A SWINGING DOOR IT SHALL BE MEASURED BETWEEN THE FACE OF THE DOOR AND THE STOP, WITH THE DOOR OPEN 90 DEGREES. THERE SHALL BE NO PROJECTIONS INTO IT BELOW 34"; UP TO 4" MAXIMUM PROJECTIONS ARE ALLOWED BETWEEN 34" AND 80" ABOVE THE FINISH FLOOR OR GROUND. DOOR CLOSERS AND STOPS SHALL BE PERMITTED TO BE 78" MINIMUM ABOVE THE FINISH FLOOR OR GROUND. CBC SECTION 11B-404.2.3
- HANDLES, PULLS, LATCHES, LOCKS, AND OTHER OPERABLE PARTS ON ACCESSIBLE DOORS SHALL COMPLY WITH CBC SECTION 11B-309.4 AND SHALL BE OPERABLE WITH ONE HAND AND SHALL NOT REQUIRE TIGHT GRASPING, FINCHING, OR TWISTING OF THE WRIST. OPERABLE PARTS OF SUCH HARDWARE SHALL BE 34" MINIMUM AND 44" MAXIMUM ABOVE FINISH FLOOR OR GROUND. WHERE SLIDING DOORS ARE IN THE FULLY OPEN POSITION, OPERATING HARDWARE SHALL BE EXPOSED AND USABLE FROM BOTH SIDES. CBC SECTION 11B-404.2.7
- THE LEVERS OF LEVER ACTUATED LATCHES OR LOCKS FOR DOORS AND ACCESSIBLE GATES SHALL BE CURVED WITH A RETURN TO WITHIN 1/2 INCHES OF THE GATE SURFACES TO PREVENT CATCHING ON THE CLOTHING OR PERSONS PER CALIFORNIA REFERENCED STANDARDS CODE, T-24 PART 1.2, SECTION 12-10-202, ITEM (F).
- THE FORCE FOR PUSHING OR PULLING OPEN A DOOR SHALL BE AS FOLLOWS, PER CBC SECTION 11B-404.2.9:
  - INTERIOR HINGED DOORS, SLIDING OR FOLDING DOORS, AND EXTERIOR HINGED DOORS: 5 POUNDS (22.2 N) MAXIMUM. CASE-BY-CASE EXCEPTIONS MAY BE ALLOWED FOR REQUIRED FIRE DOORS WHEN SPECIFICALLY ALLOWED BY DSA (THE APPROPRIATE ADMINISTRATIVE AUTHORITY), BUT NOT TO EXCEED 15 POUNDS (66.7N). THESE FORCES DO NOT APPLY TO THE FORCE REQUIRED TO RETRACT LATCH BOLTS OR DISENGAGE OTHER DEVICES THAT HOLD THE DOOR IN A CLOSED POSITION.
  - THE FORCE REQUIRED FOR ACTIVATING ANY OPERABLE PARTS, SUCH AS LEVER HARDWARE, OR DISENGAGING OTHER DEVICES SHALL BE 5 POUNDS (22.2N) MAXIMUM TO COMPLY WITH CBC SECTION 11B-309.4.

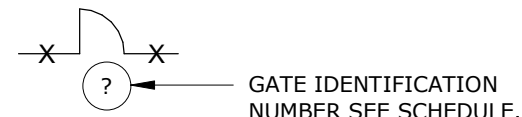
- DOOR CLOSING SPEED SHALL BE AS FOLLOWS PER CBC SECTION 11B-404.2.8:
  - CLOSER SHALL BE ADJUSTED SO THAT THE REQUIRED TIME TO MOVE A DOOR FROM AN OPEN POSITION OF 90 DEGREES TO A POSITION OF 12 DEGREES FROM THE LATCH IS 5 SECONDS MINIMUM.
  - SPRING HINGES SHALL BE ADJUSTED SO THAT THE REQUIRED TIME TO MOVE A DOOR FROM AN OPEN POSITION OF 70 DEGREES TO THE CLOSED POSITION IS 1.5 SECONDS MINIMUM.
- THRESHOLDS SHALL COMPLY WITH CBC SECTION 11B-404.2.5.
- FLOOR STOPS SHALL NOT BE LOCATED IN THE PATH OF TRAVEL AND 4" MAXIMUM FROM WALLS.
- HARDWARE (INCLUDING PANIC HARDWARE) SHALL NOT BE PROVIDED WITH "NIGHT LATCH" (NL) FUNCTION FOR ANY ACCESSIBLE DOORS OR GATES UNLESS THE FOLLOWING CONDITIONS ARE MET: (SUCH CONDITIONS MUST BE CLEARLY DEMONSTRATED AND INDICATED IN THE SPECIFICATIONS)
  - SUCH HARDWARE HAS A "DOGGING" FEATURE.
  - IT IS DOGGED DURING THE TIME THE FACILITY IS OPEN.
  - SUCH "DOGGING" OPERATION IS PERFORMED ONLY BY EMPLOYEES AS THEIR JOB FUNCTION (NON-PUBLIC USE).
- EMERGENCY EXIT & PANIC HARDWARE SHALL COMPLY WITH SFM STANDARD 12-10-3, SECTION 12-10-302:
  - (A) THE CROSS-BAR SHALL EXTEND ACROSS NOT LESS THAN ONE-HALF THE WIDTH OF THE DOOR/GATE.
  - (D) THE ENDS OF THE CROSS-BAR SHALL BE CURVED, GUARDED OR OTHERWISE DESIGNED TO PREVENT CATCHING ON THE CLOTHING OF PERSONS DURING EGRESS.
- SWING DOORS AND GATE SURFACES WITHIN 10" OF THE FINISH FLOOR OR GROUND SHALL HAVE A SMOOTH SURFACE ON THE PUSH SIDE EXTENDING THE FULL WIDTH OF THE DOOR OR GATE. PARTS CREATING HORIZONTAL OR VERTICAL JOINTS IN THESE SURFACES SHALL BE WITHIN 1/16" OF THE SAME PLANE AS THE OTHER AND BE FREE OF SHARP OR ABRASIVE EDGES. CAVITIES CREATED BY ADDED KICK PLATES SHALL BE CAPPED. CBC SECTION 11B-404.2.10.

GATE SCHEDULE & NOTES

NO.	SIZE (WIDTH x HEIGHT)	MATERIAL	FINISH	DETAILS	HARDWARE GROUP	PANIC HARDWARE	NOTES
G1 (E)	PR 4' - 0" x 7' - 0"	STL	(E)	23 / ASD-1.2	(E)	YES (E)	1,2
G2 (E)	PR 4' - 0" x 7' - 0"	STL	(E)	23 / ASD-1.2	HW-2	YES (NEW)	1,2
G3 (N)	4' - 0" x 4' - 0"	CL	(N)	3 / ASD-1.2	HW-1	YES (NEW)	N/A
G4 (E)	5' - 0" x 4' - 0"	CL	(E)	(E)	(E)	NO	1,3
G5 (E)	PR 4' - 0" x 8' - 0"	CL	(E)	2 / ASD-1.2	HW-2	YES (NEW)	N/A
G6 (E)	PR 10' - 0" x 8' - 0"	CL	(E)	(E)	(E)	NO	1,3

- NOTES:
- (E) GATE TO REMAIN
  - ALL GATES/DOORS IN PATH OF TRAVEL TO COMPLY WITH 2022 CBC 11B-404 (SEE NOTES ADJACENT TO SCHEDULE)
  - SERVICE GATE ONLY

ABBREVIATIONS:  
CL GALVANIZED CHAIN LINK  
PR PAIR OF GATES  
STL STEEL ORNAMENTAL  
PH PANIC HARDWARE DEVICE  
HM HOLLOW METAL



HW-1 EACH GATE TO HAVE			
3	GATE HINGE	2060.100	600
1	EXIT DEVICE	AX-PA-99NL-OP x 110NL x WH	626
1	RIM CYLINDER	20-057-ICX	626
1	PERMANENT CORE	23-030	626
1	ANTI VANDAL PULL	VR510-NL-US32D	630
1	GATE CLOSER	K-BK4152	600
1		1351	BLK
HW-2 EACH PAIR GATE TO HAVE			
6	GATE HINGE	2060.100	600
1	EXIT DEVICE	AX-PA-99NL-OP x 110NL x WH	626
1	EXIT DEVICE	AX-PA-99ED x WH	626
1	RIM CYLINDER	20-057-ICX	626
1	PERMANENT CORE	23-030	626
1	ANTI VANDAL PULL	VR510-NL-US32D	630
1	ANTI VANDAL PULL	VR510-NL-US32D-BLANK	630
2	GATE BOX	K-BK4152	600
2	GATE CLOSER	1351	BLK

CONSULTANT BRANDING

RUHNAU  
CLARKE  
ARCHITECTS

GENERAL NOTES

- VERIFY ALL DIMENSIONS PRIOR TO CONSTRUCTION.
- EXTERIOR PAVEMENT AND CONTAINER GRAPHICS TO BE APPLIED BY ARTISAN MURALIST. (A) ADD.

KEYNOTES

- |             |   |
|-------------|---|
| 02 02 01    | EXISTING LIGHT POLE TO REMAIN, PROTECT IN PLACE             |
| 02 02 02    | EXISTING GATE TO REMAIN, PROTECT IN PLACE                   |
| 02 02 03    | EXISTING FENCE & CURB TO REMAIN, PROTECT IN PLACE           |
| 02 02 04    | EXISTING ROLLING CHAINLINK GATE TO REMAIN, PROTECT IN PLACE |
| 02 02 05    | EXISTING CHAINLINK GATE TO REMAIN, PROTECT IN PLACE         |
| 11 68 13    | (N) PLAYGROUND EQUIPMENT                                    |
| 11 68 14    | (E) PLAYGROUND EQUIPMENT TO REMAIN. DSA A# UNKNOWN          |
| 11 68 33.23 | (N) SOCCER FIELD EQUIPMENT                                  |
| 22 47 13    | (N) ACCESSIBLE DUAL HEIGHT DRINKING FOUNTAIN                |
| 32 93 43    | NEW TREES   |

LEGEND

- SITE PROPERTY LINE
  - - - ASSUMED PROPERTY LINE
  - SCOPE OF WORK LIMIT
- DESIGN PROFESSIONAL IN GENERAL RESPONSIBLE CHARGE STATEMENT:**  
THE P.O.T. IDENTIFIED IN THESE CONSTRUCTION DOCUMENTS IS COMPLIANT WITH THE CURRENT APPLICABLE CALIFORNIA BUILDING CODE ACCESSIBILITY PROVISIONS FOR PATH OF TRAVEL REQUIREMENTS FOR ALTERATIONS, ADDITIONS AND STRUCTURAL REPAIRS. AS PART OF THE DESIGN OF THE PROJECT, THE P.O.T. WAS EXAMINED AND ANY ELEMENTS, COMPONENTS OR PORTIONS OF THE P.O.T. THAT WERE DETERMINED TO BE ONE-COMPLIANT 1.) HAVE BEEN IDENTIFIED AND 2.) THE CORRECTIVE WORK NECESSARY TO BRING THEM INTO COMPLIANCE HAS BEEN INCLUDED WITHIN THE SCOPE OF THIS PROJECTS WORK THROUGH DETAILS, DRAWINGS AND SPECIFICATIONS INCORPORATED INTO THESE CONSTRUCTION DOCUMENTS, ANY NON-COMPLIANT ELEMENTS, COMPONENTS, OR PORTIONS OF THE P.O.T. THAT WILL NOT BE CORRECTED BY THIS PROJECT BASED ON VALUATION THRESHOLD LIMITATIONS OR FINDING OF UNREASONABLE HARDSHIP ARE SO INDICATED IN THESE CONSTRUCTION DOCUMENTS.
- PATH OF TRAVEL, TECHNICAL REQUIREMENTS FOR ACCESSIBLE ROUTE**  
ACCESSIBLE PATH OF TRAVEL AS INDICATED ON PLAN IS A BARRIER FREE ACCESS ROUTE WITHOUT ABRUPT LEVEL CHANGES EXCEEDING 1/2 INCHES IF BEVELED AT 1:2 MAXIMUM SLOPE OR VERTICAL LEVEL CHANGES NOT EXCEEDING 1/4 INCHES MAXIMUM AND AT LEAST 48 INCHES IN WIDTH. SURFACE IS STABLE, FIRM, AND SLIP-RESISTANT. CROSS-SLOPE SHALL NOT BE STEEPER THAN 1:48 AND SLOPE IN THE DIRECTION OF TRAVEL SHALL NOT BE STEEPER THAN 1:20. ACCESSIBLE PATH OF TRAVEL SHALL BE MAINTAINED FREE OF INCHES FROM THE WALL, ABOVE 27 INCHES AND LESS THAN 80 INCHES ABOVE THE FLOOR. ARCHITECT SHALL VERIFY THAT THERE ARE NO BARRIERS IN THE PATH OF TRAVEL.
- (N) PLAY SURFACING, SEE DETAILS FOR ADDITIONAL INFORMATION, SEE CIVIL DRAWINGS
  - (N) ASPHALT PER CIVIL DWGS
  - (N) ASPHALT PER CIVIL DWGS
  - (E) LANDSCAPE
  - (N) CONCRETE PER CIVIL DWGS

OVERALL SITE PLAN 1

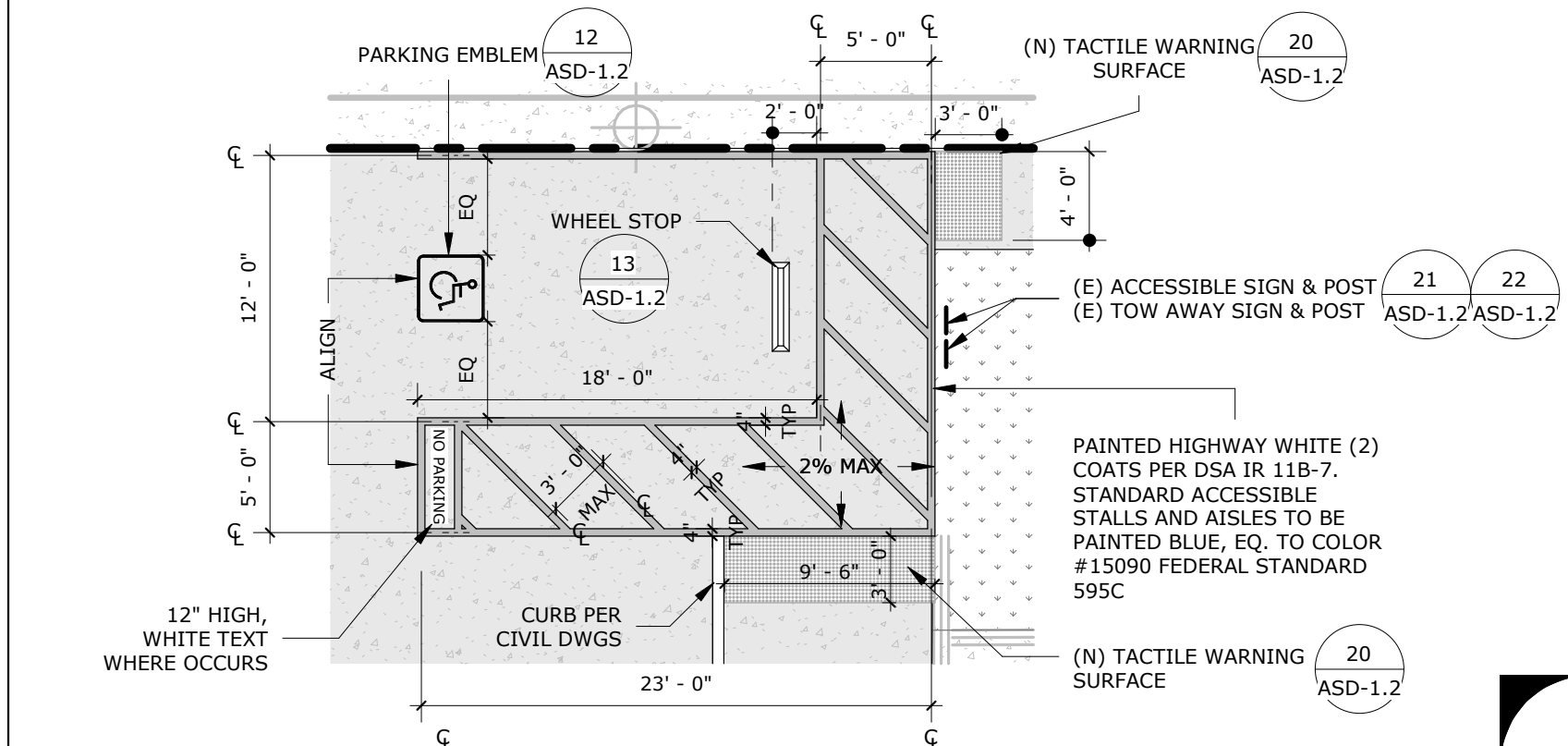
PARKING CALCULATION

(E) PARKING LOT #A	
STANDARD PARKING STALL PROVIDED	2
ACCESSIBLE PARKING STALLS REQUIRED - INCLUDING VAN PER CBC TABLE 11B-208.2	1
ACCESSIBLE PARKING STALLS PROVIDED - INCLUDING VAN	1
<b>TOTAL PARKING PROVIDED INCLUDING ACCESSIBLE STALLS</b>	<b>4</b>

BUILDING NAME	BUILDING ANALYSIS					BUILDING AREA (S.F.)		FRONTAGE INCREASE AND AREA MODIFICATION (CBC TABLE 504.3)	BLDG. HT. (ACTUAL)	ALLOWABLE BLDG. AREA (CBC TABLE 506.2)	BLDG. AREA (ACTUAL)	MIXED USE/OCCUPANCY AREA CALCULATION (CBC SECTION 508)	EXTERIOR WALL PROTECTION (CBC TABLE 601 & 602)		MAX. AREA OF EXTERIOR WALL OPENINGS BASED ON FIRE SEPARATION DISTANCE (CBC TABLE 705.8)	A.F.S.S. AUTO FIRE SPRINKLER SYSTEM	COMMENTS
	OCC. TYPE (CBC SECTION 302)	CONST. TYPE (CBC SECTION 602)	ALLOWABLE STORIES (CBC TABLE 504.4)	ACTUAL STORIES	ALLOWABLE BLDG. HT. (CBC TABLE 504.3)	ALLOWABLE BLDG. AREA (CBC TABLE 506.2)	BLDG. AREA (ACTUAL)						BEARING	NON-BEARING			
(N) METAL SHADE STRUCTURE #1	A-3	V-B	1	1	40'-0"	18'-10"	6,000 (NS)	40' x 40' = 1,600 SF				NOT USED	0	0	N/A	NO	N/A
(N) METAL SHADE STRUCTURE #2	A-3	V-B	1	1	40'-0"	13'-2"	6,000 (NS)	30' x 20' = 600 SF				NOT USED	0	0	N/A	NO	N/A

METAL SHADE STRUCTURES CODE ANALYSIS

NEW ENLARGED ACCESSIBLE PARKING 2



PROJECT No. 1-78-54  
8/22/2025 4:05:31 PM

DRAWN BY:	DATE	CHECKED BY:	DATE
DELTA #	A	ADD	8/22/25
DELTA #	DATE	ADD	
DELTA #	DATE	ADD	
DELTA #	DATE	ADD	

RUHNAUCLARKE.COM

ARROWHEAD ELEMENTARY SCHOOL  
PLAYGROUND IMPROVEMENTS

OVERALL SITE PLAN

G-2

3825 N MOUNTAIN VIEW AVE, SAN BERNARDINO, CA 92405  
SAN BERNARDINO CITY UNIFIED SCHOOL DISTRICT



STAMPS

CONSULTANT BRANDING

- ALL GATES ALONG FIRE APPARATUS ACCESS ROADS SHALL BE A MINIMUM OF 20'-0" WIDE
- CONTRACTOR TO PROVIDE ALL REQUIRED SIGNAGE PER LOCAL FIRE AUTHORITY
- FIRE APPARATUS ACCESS ROADS SHALL BE DESIGNED AND MAINTAINED TO SUPPORT THE IMPOSED LOADS OF FIRE APPARATUS AND SHALL BE SURFACED SO AS TO PROVIDE ALL-WEATHER DRIVING CAPABILITIES, PER 2022 CFC SECTION 503.2.3

## GENERAL NOTES



810

### FIRE & LIFE SAFETY SITE CONDITIONS SUBMITTAL

Division of the State Architect (DSA) documents referenced within this publication are available on the DSA Forms or DSA Publications webpages.

To facilitate the Division of the State Architect's (DSA) fire and life safety plan review of project site conditions, DSA requires the design professional to provide the following information at time of project submittal for projects consisting of construction of a new campus, construction of new building(s), additions to existing buildings, and for site alternate design means for fire department emergency vehicle access, and fire suppression water supply. Information associated with compliance items 1 through 3 below is to be provided for all project types indicated above. Information associated with items 4 through 7 is to be completed when an alternate means is utilized. Acknowledgement by the school district and signature from the Local Fire Authority (LFA) is only required when an alternate design means is being requested.

The Project Information and Fire & Life Safety Information sections are to be completed for all projects and imaged onto the fire access site plan. When an alternate design/means is proposed, all sections on pages 1 and 2 are to be completed and imaged on the fire access site plan.

For additional information refer to the instructions at the end of this form and DSA Policy PL 09-01: Fire Flow for Buildings.

PROJECT INFORMATION			
School District/Owner:	SAN BERNARDINO CITY UNIFIED SCHOOL DISTRICT		
Project Name/School:	ARROWHEAD ELEMENTARY SCHOOL PLAYGROUND IMPROVEMENTS		
Project Address:	3825 N MOUNTAIN AVE, SAN BERNARDINO, CA 92405		
FIRE & LIFE SAFETY INFORMATION			
1. Has a fire hydrant flow test been performed within the past 12 months? (If yes, provide a copy of the test data.)	Yes <input type="checkbox"/>	No <input checked="" type="checkbox"/>	
2. Was the fire hydrant water flow test performed as part of this LFA review?	Yes <input type="checkbox"/>	No <input checked="" type="checkbox"/>	
3. Is the project located within a designated fire hazard severity zone (FHSZ) as established by CalFire? (If yes, indicate FHSZ classification below.)	Yes <input type="checkbox"/>	No <input checked="" type="checkbox"/>	
Refer to the following website for FHSZ locations: Fire Hazard Severity Zones in State Responsibility Area	Moderate <input type="checkbox"/>	High <input type="checkbox"/>	Very High <input type="checkbox"/>
Wildland Interface Area (WIFA) (If any designations are checked, project design must meet the requirements of CBC Chapter 7A.)			WIFA <input type="checkbox"/>

DGS DSA 810 (revised 12/28/20) DEPARTMENT OF GENERAL SERVICES STATE OF CALIFORNIA Page 1 of 4

## DSA 810

INDICATES 20'-0" MIN. WIDE DRIVES, FIRE TRUCK ACCESS LANE WITH NOT LESS THAN 13'-6" VERTICAL CLEARANCE PER CFC 2022 EDITION. CONTRACTOR TO PROVIDE ALL REQUIRED PAINTING OR CURBS AND PROVIDE ALL SIGNAGE PER LOCAL FIRE AUTHORITY REQUIREMENTS. SEE CIVIL DWGS FOR SUBSTRATE DESIGN.

INDICATES MINIMUM TURNING RADIUS FOR THE FIRE TRUCK ACCESS

FIRE HYDRANT  
FH

LOCATION OF MAIN SCHOOL ADDRESS  
(MONUMENT SIGN AT ENTRANCE)

20'-0" MIN. WIDE FIRE TRUCK ACCESS GATES

KNOX PADLOCK FOR ENTRY KEY  
(MIN. KNOX BOX 3000 SERIES MODEL)

FIRE LANE STRIPING  
(CONTINUOUS CURB PAINTED OSHA SAFETY RED W/ 3" HIGH WHITE STENCIL PAINTED "FIRE LANE - NO PARKING" LETTERING)

PLAY SURFACING. SEE DETAILS FOR ADDITIONAL INFORMATION. SEE CIVIL DRAWINGS

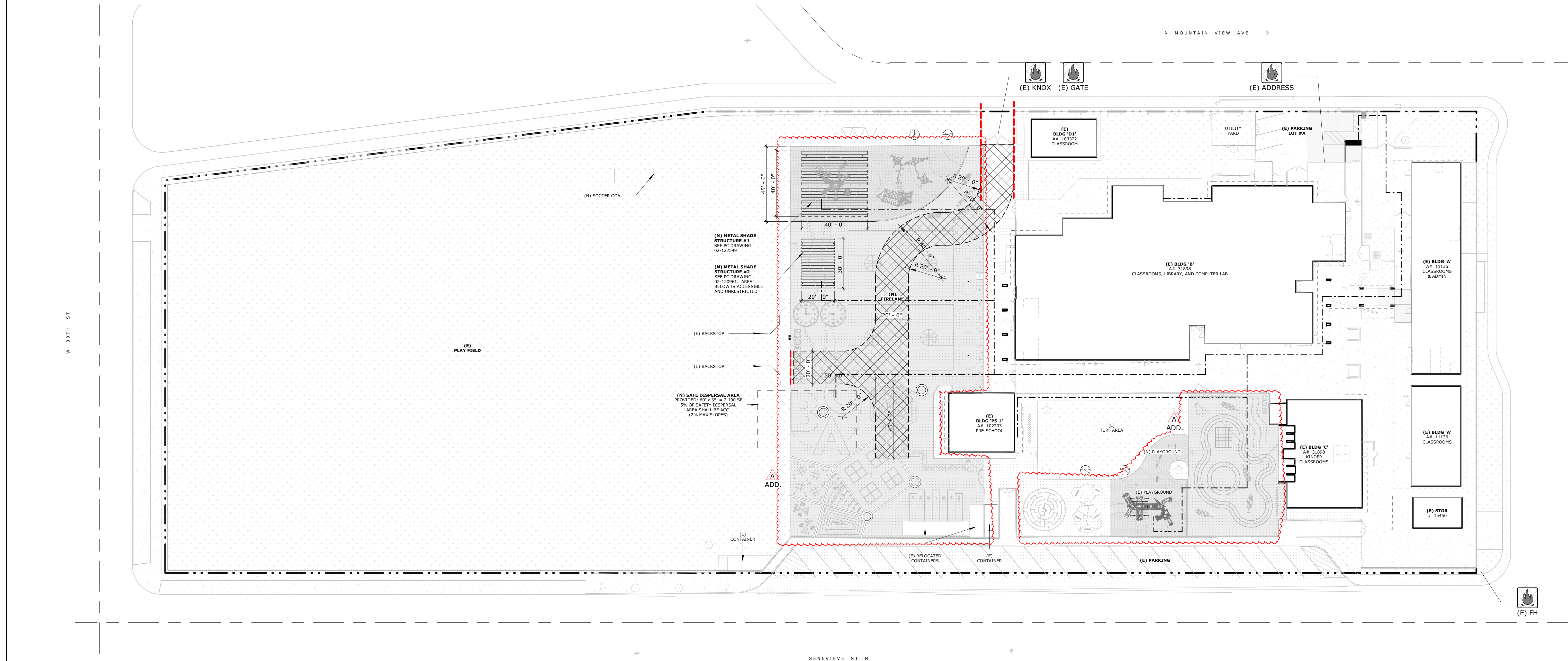
(N) ASPHALT PER CIVIL DWGS

(N) ASPHALT PER CIVIL DWGS

(E) LANDSCAPE

(N) CONCRETE PER CIVIL DWGS

## LEGEND



## FIRE ACCESS SITE PLAN

SCALE: 1" = 30'-0"

REF: /

3

PROJECT No. :1-78-54  
8/22/2025 4:05:33 PM

DRAWN BY: \_\_\_\_\_  
CHECKED BY: \_\_\_\_\_  
DATE: 8/22/25  
DELTA # \_\_\_\_\_  
DATE: \_\_\_\_\_  
DELTA # \_\_\_\_\_  
DATE: \_\_\_\_\_

ADD \_\_\_\_\_  
REV \_\_\_\_\_  
ADD \_\_\_\_\_  
REV \_\_\_\_\_  
ADD \_\_\_\_\_  
REV \_\_\_\_\_

RUHNAUCLARKE.COM

3775 TENTH STREET, RIVERSIDE CALIFORNIA 92503 (951) 684-4664 / 5751 PALMER WAY, SUITE C, CARLSBAD CALIFORNIA 92010 (760) 438-5899

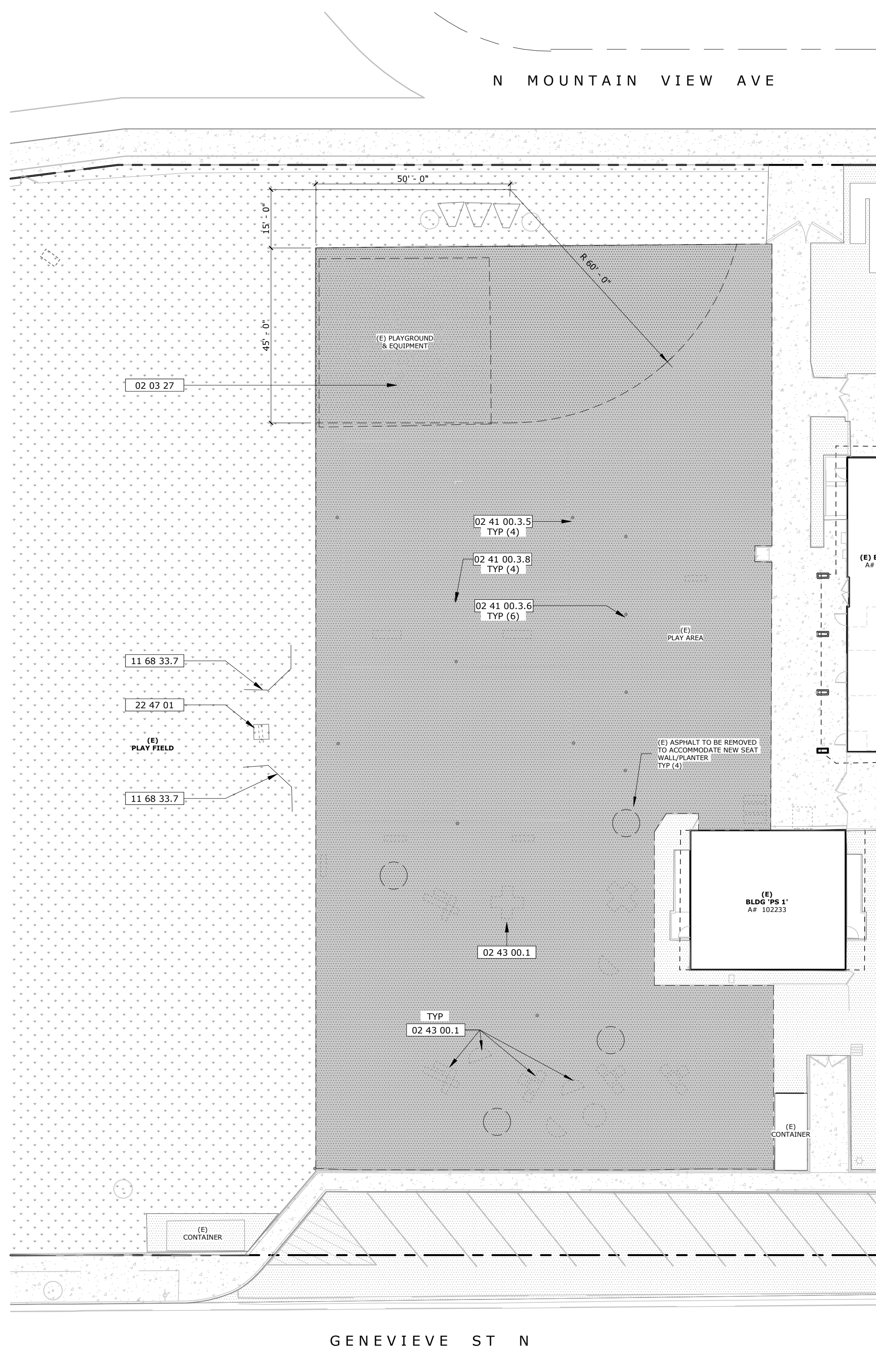
ARROWHEAD ELEMENTARY SCHOOL  
PLAYGROUND IMPROVEMENTS

3825 N MOUNTAIN VIEW AVE, SAN BERNARDINO, CA 92405  
SAN BERNARDINO CITY UNIFIED SCHOOL DISTRICT

FIRE ACCESS SITE  
PLAN

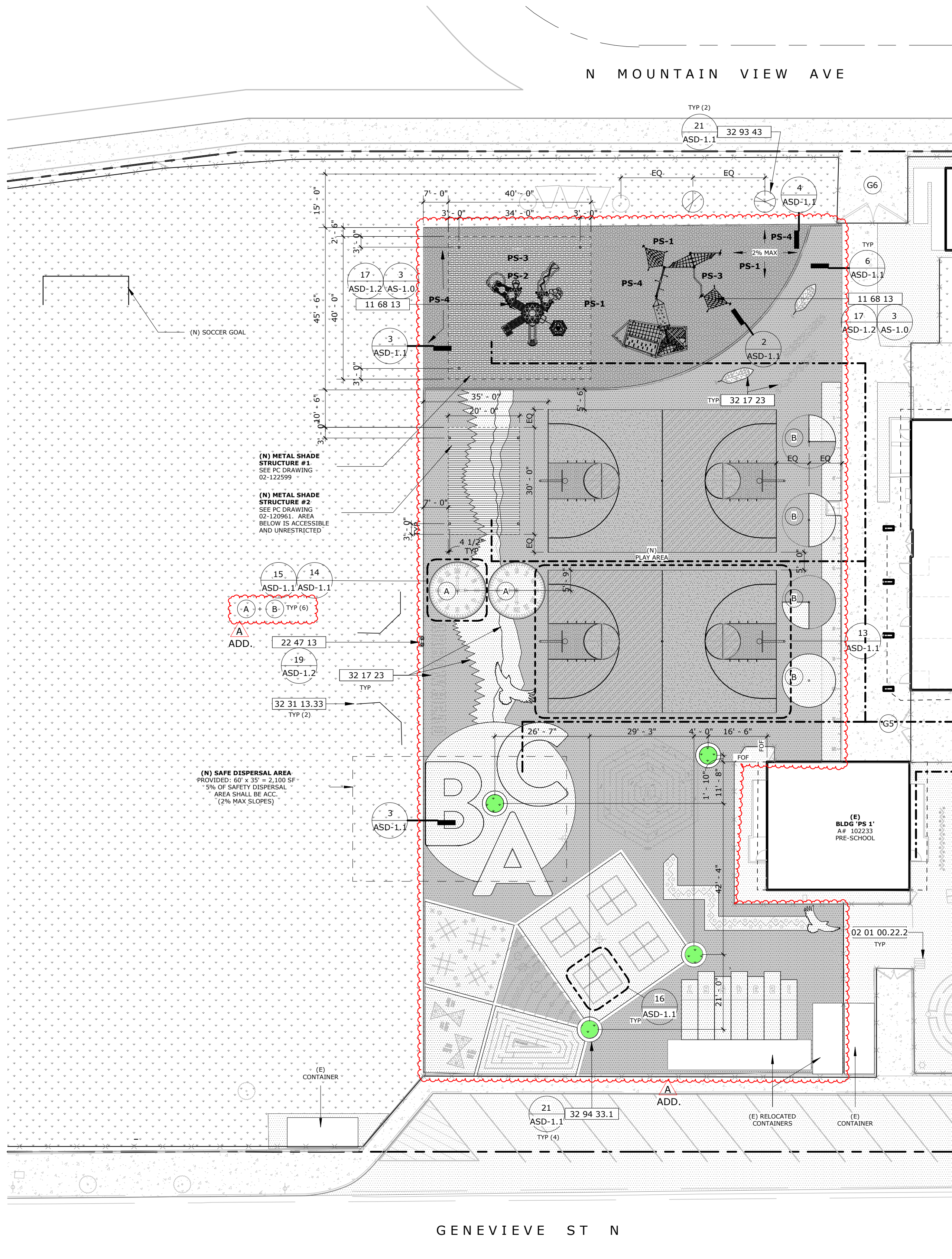
G-3





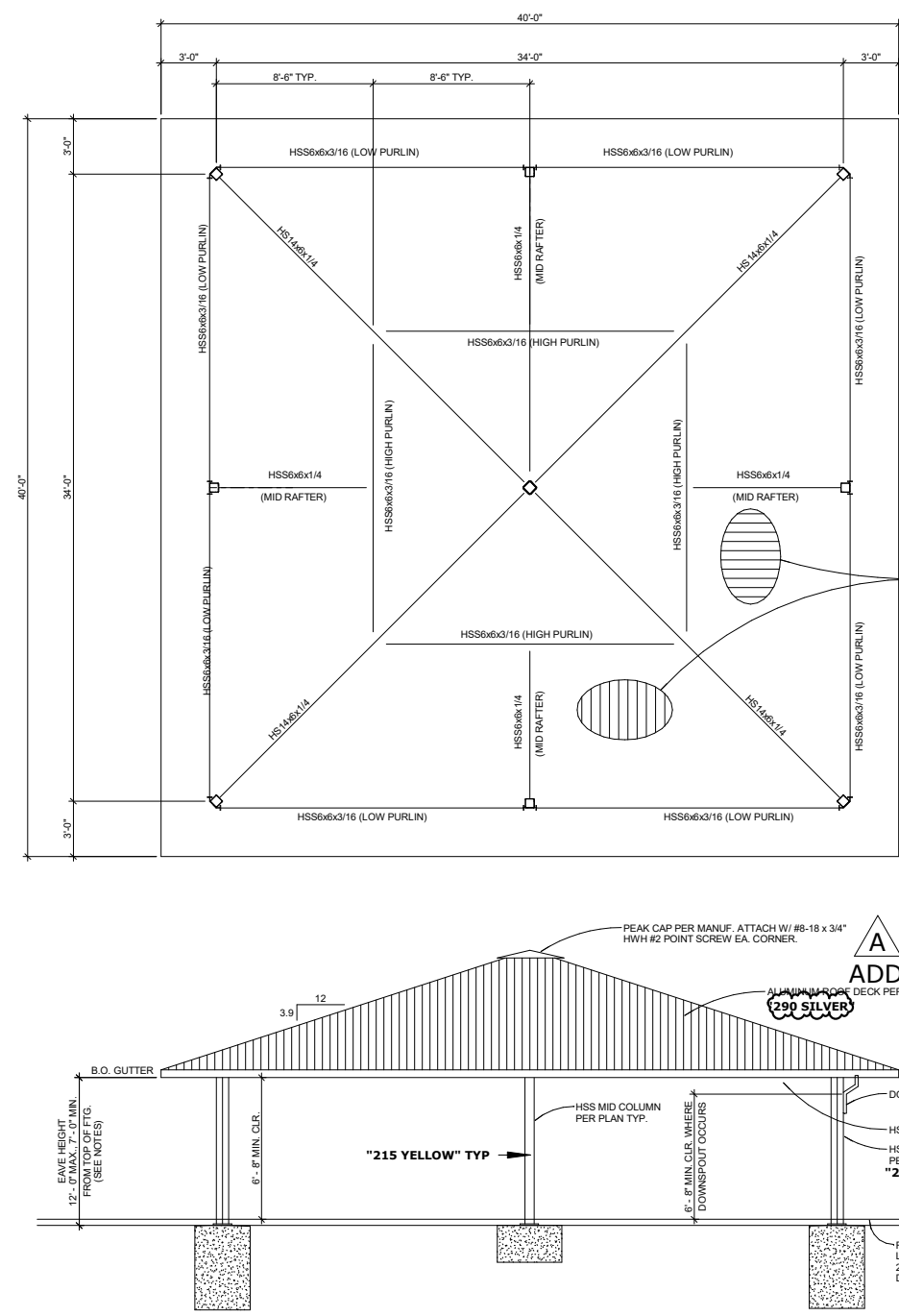
ENLARGED DEMO SITE PLAN

SCALE: 1" = 20'-0"  
REF: 1



ENLARGED NEW SITE PLAN

SCALE: 1" = 20'-0"  
REF: 17/ASD-1.2



SHADE STRUCTURES #1 & #2

SCALE: 1" = 10'-0"  
REF: 4

PLAYGROUND EQUIPMENT  
(BASIS OF DESIGN: DAVE BANG C24106PM)

No.	PRODUCT DESCRIPTION	ITEMS	ELEVATED COMPONENTS ACCESSIBLE BY TRANSFER	ACCESSIBLE GROUND LEVEL COMPONENTS	TYPE OF PLAY	No.	PRODUCT DESCRIPTION	ITEMS	ELEVATED COMPONENTS ACCESSIBLE BY TRANSFER	ACCESSIBLE GROUND LEVEL COMPONENTS	TYPE OF PLAY
01	TRANSFER STATION	ZZCH2027	-	-	-	13	TIANZI PITCH CROSSING	ZZPM5003	-	-	CLIMBER
02	GLIDE SLIDE	ZZCH3126	-	-	SLIDE	14	TIANZI TWO-POINT WEDGE	ZZPM5004	-	-	CLIMBER
03	ZIGZAG SLIDE	ZZCH3236	-	-	SLIDE	15	TIANZI THREE-POINT TRAVERSE - DOUBLE	ZZPM5007	-	-	CLIMBER
04	NUVO 360 SPIRAL SLIDE	ZZCH3537	-	-	SLIDE	16	TRAIL SLING - NAICA TO PM POST	ZZPM6313	-	-	BALANCE
05	DRIVING PANEL	ZZCH4406	-	1	PANEL	17	TELESCOPE PIPE WALL MOUNT (CH/EX)	ZZUN4279	1	-	PANEL
06	BELL PANEL	ZZCH4409	-	1	PANEL	18	A-MAZE-ING INSERT	ZZUN4673	1	-	PANEL
07	7IN BELL	ZZCH4556	-	1	AUDIBLE ACTIVITY	19	PLAYCUBE- GROUND LEVEL	ZZUN8727	-	-	CLIMBER
08	POST MOUNT SCAVENGER HUNT	ZZCH4648	-	1	PANEL						
08	GEO ARCH CLIMBER	ZZCH7007	-	-	CLIMBER						
09	TOWER CLIMBER	ZZCH7168	-	-	CLIMBER						
10	SILO CLIMBER	ZZCH7957	-	-	CLIMBER						
11	TRANSITION CLIMBER	ZZCH8939	-	-	CLIMBER						
12	TIANZI TOP ROPE PASS	ZZPM5002	-	-	CLIMBER						

PLAYGROUND EQUIPMENT SCHEDULE

SCALE: 1/16" = 1'-0"  
REF: 7

PLAYGROUND EQUIPMENT NOTES

- ALL PLAY COMPONENTS SHALL COMPLY WITH SCOPING REQUIREMENTS OF CBC SECTION 11B-240.2 AND PLAY AREA W/ PLAY COMPONENTS AND STRUCTURES PROVIDED COMPLY WITH CBC CHAPTER 11B-100B AND ADA STANDARD.
- 11B-100B.3 TRANSFER SYSTEMS:** SHALL BE PROVIDED PLAY EQUIPMENT AS FOLLOW:  
A. SIZE: TRANSFER PLATFORMS AND TRANSFER STEPS SHALL HAVE LEVEL SURFACES 14" DEEP MIN. AND 24" WIDE MIN. PER 11B-100B.3.1.1 AND 11B-100B.3.2.1  
B. HEIGHT: THE HEIGHT OF TRANSFER PLATFORMS SHALL BE 11" TO 18" MEASURED TO THE TOP OF THE SURFACE FROM THE GROUND OR FLOOR SURFACE PER 11B-100B.3.1.2  
C. THE HEIGHT OF TRANSFER STEPS SHALL BE 8 INCHES HIGH MAX. PER 11B-100B.3.2.2
- 11B-100B.3.1.3 TRANSFER SPACE:** SHALL BE PROVIDED PLAY EQUIPMENT AS FOLLOW:  
A. A TRANSFER SPACE COMPLYING WITH SECTIONS 11B-305.2 & 11B-305.3 SHALL BE PROVIDED ADJACENT TO THE TRANSFER PLATFORM 48" LONG MIN. DIMENSION OF THE TRANSFER SPACE SHALL BE CENTERED ON AND PARALLEL TO THE 24" LONG MIN. SIDE ON THE TRANSFER PLATFORM. THE SIDE OF THE TRANSFER PLATFORM SERVING THE TRANSFER SPACE SHALL BE UNOBSTRUCTED PER FIGURE 11B-100B.3.1  
B. AT LEAST ONE MEANS OF SUPPORT FOR TRANSFERRING SHALL BE PROVIDED  
C. THE HEIGHT OF TRANSFER STEPS SHALL BE 8 INCHES HIGH MAX. PER 11B-100B.3.2.2
- 11B-100B.3.2.1 CONTRASTING STRIPE:** SHALL BE PROVIDED STRIPING AT EACH TRANSFER STEP PER SECTION 11B-505.4.1
- 05. PLAY AREA PER 11B-240 & 11B-100B:** SHALL BE MINIMUM REQUIRED AS FOLLOW:  
A. SHALL BE CLEAR FLOOR OR GROUND SPACE PER CBC SECTION 100B.4.2 AND TURNING SPACE PER SECTION 11B-100B.4.1 FOR ALL GROUND LEVEL PLAY COMPONENTS ON AN ACCESSIBLE ROUTE  
B. GROUND SURFACES ON ACCESSIBLE ROUTES, CLEAR FLOOR OR GROUND SPACES, AND TURNING SPACES SHALL COMPLY WITH ASTM F1292, (1999 EDITION OR 2004 EDITION) PER CBC SECTION 11B-100B.2.6  
C. GROUND SURFACES SHALL COMPLY WITH ASTM F1951 (PER 11B-100B.2.6.1) AND SHALL BE INSPECTED AND MAINTAINED REGULARLY & FREQUENTLY TO ENSURE CONTINUOUS COMPLIANCE W/ ASTM F1951
- 06. FOR ACCESSIBLE SWING:** AT LEAST ONE OF THE SWINGS SET TO BE RIGID 24" WIDE SWING THAT IS 11" TO 24" A.F.F., WITH 30"x48" WHEELCHAIR SPACE PER 11B-100B.4.4

PROJECT No. :1-78-54  
8/22/2025 4:05:37 PM

DRAWN BY: DELTA # A DATE: 8/22/25  
CHECKED BY: ADD AFO CDD REV  
DELTA # A DATE: 8/22/25  
DELTA # A DATE: 8/22/25

RUHNAUCLARKE.COM

3775 TENTH STREET, RIVERSIDE CALIFORNIA 92501 (951) 684-4664 / 5751 PALMER WAY, SUITE C, CARLSBAD CALIFORNIA 92001 (760) 438-5899

ARROWHEAD ELEMENTARY SCHOOL  
PLAYGROUND IMPROVEMENTS

3825 N MOUNTAIN VIEW AVE, SAN BERNARDINO, CA 92405  
SAN BERNARDINO CITY UNIFIED SCHOOL DISTRICT

ENLARGED DEMO AND  
NEW SITE PLAN

AS-1.0





TOTAL ELEVATED PLAYACTIVITIES:	0	REQUIRED:	-
TOTAL ELEVATED PLAY ACTIVITIES ACCESSIBLE BY RAMP:	0	REQUIRED:	0
TOTAL ELEVATED PLAY ACTIVITIES ACCESSIBLE BY TRANSFER:	5	REQUIRED:	3
TOTAL GROUND LEVEL ACTIVITIES:	3	REQUIRED:	2
TOTAL GROUND LEVEL QUANTITY:	3	REQUIRED:	2
MAXIMUM FALL HEIGHT	60"		

SCALE:  
1/16" = 1'-0"  
REF.: /



SCALE:	
$1'' = 20' - 0''$	<b>1</b>
REF.: /	



SCALE: $1'' = 20'-0''$	2
REF.: 17 / ASD-1.2	







