

Bond Report

Citizens' Oversight Committee



Measure T and N Bonds
October 2018 - September 2019

Facilities Planning & Development Department



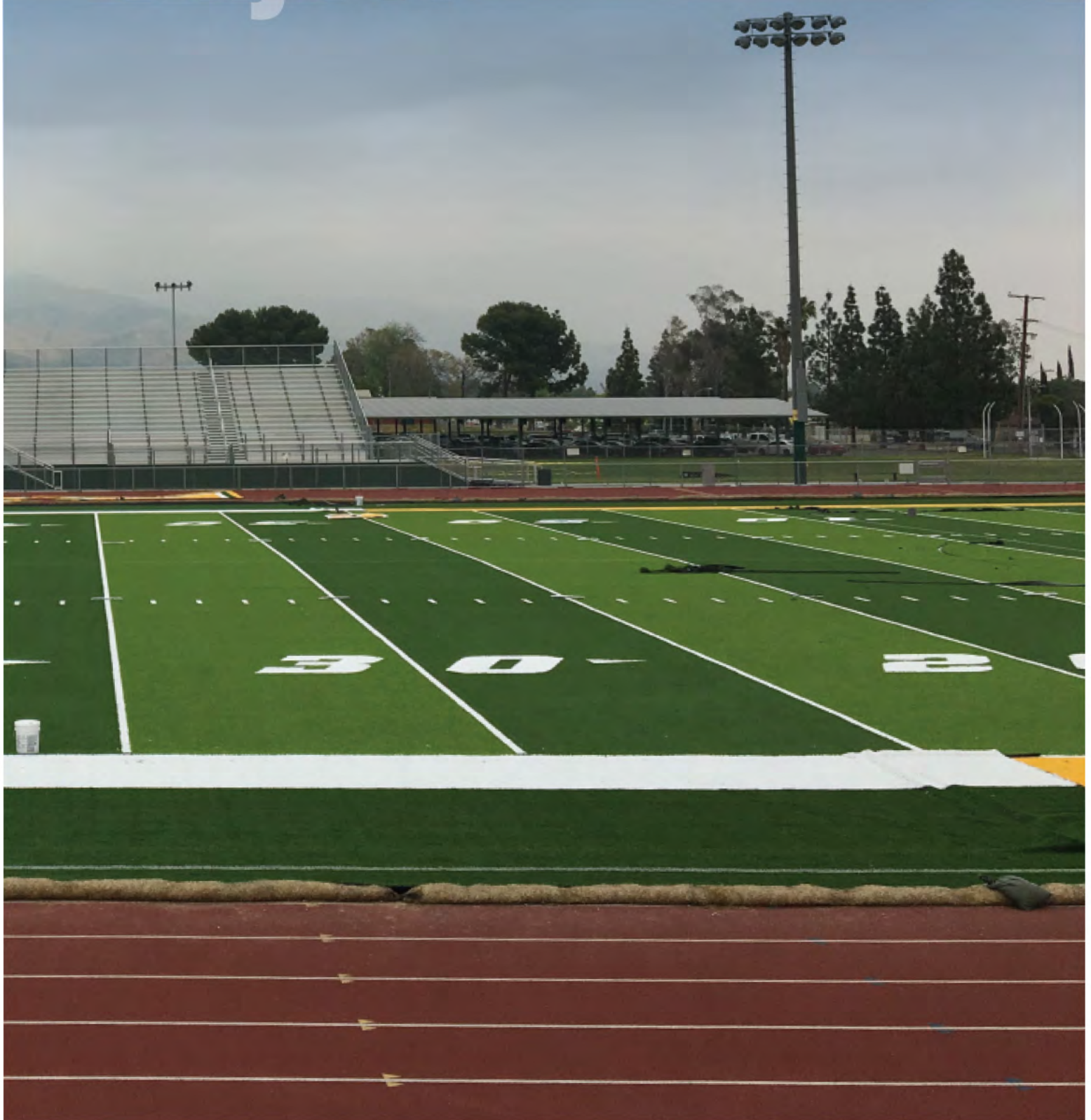
CONTENTS

Executive Summary	4
Bond Spending by Project Type and Issuance	5 - 7
Bond Spending by Account Type	8 - 10
California Constitution Statutory Requirements	11
COC Statement of District Compliance	11



Cajon HS

Cajon



The voters of the San Bernardino City Unified School District have supported the Facilities Program through the passage of Measure T and Measure N to provide funding for new schools, modernization of existing campuses as well as a wide variety of projects to improve the learning environment of the students and working conditions of the staff.

Beginning in September of 2004 the funds for Measure T have been issued in five series. The last of the authorized funds were issued in 2011 and brought the total funds available to \$132,768,819.06. Of that amount \$4,568,099.93 was held for the capitalized interest payments of Qualified School Construction Bonds (QSCB) previously sold by the District.

The District began selling the bonds from Measure N in 2013 and to date has sold a total of \$66,108,479.51 through five series. The remaining authorized bonds, up to the \$250 million, will be sold over the next several years.

This report will provide a snapshot of the spending trends of these bonds from October 2018 through September 2019. It will also provide a glimpse into the upcoming projects slated to be funded, in part or in whole, through the issuances of bonds.

The District continues to use the bond issuances to match the State funding programs to maximize the funds available to enhance the facilities available to the community that has supported the District through these bond measures.



Pacific HS

Bond Spending by Project Type and Issuance

There are several types of projects that have been identified within the Facilities Program. They are briefly defined as follows:

New-New Campuses, SDC-Special Day Classroom Buildings, Mod-Modernization of existing campus, KIT-Kitchen upgrades, ADD-Addition of New Building to existing campus, GP-Growth Portables added to existing campus, and MU-Multi-Use Room upgrades. The last category used is OTHER which encompasses a wide variety of projects such as, but not limited to, Single Point Entry Modifications, Playgrounds, Athletic Complex Improvements and HVAC upgrades.

Measure T

During the report period of October 2018 to September 2019 Measure T funds were spent on the following types of projects:

Modernizations projects at the following locations:

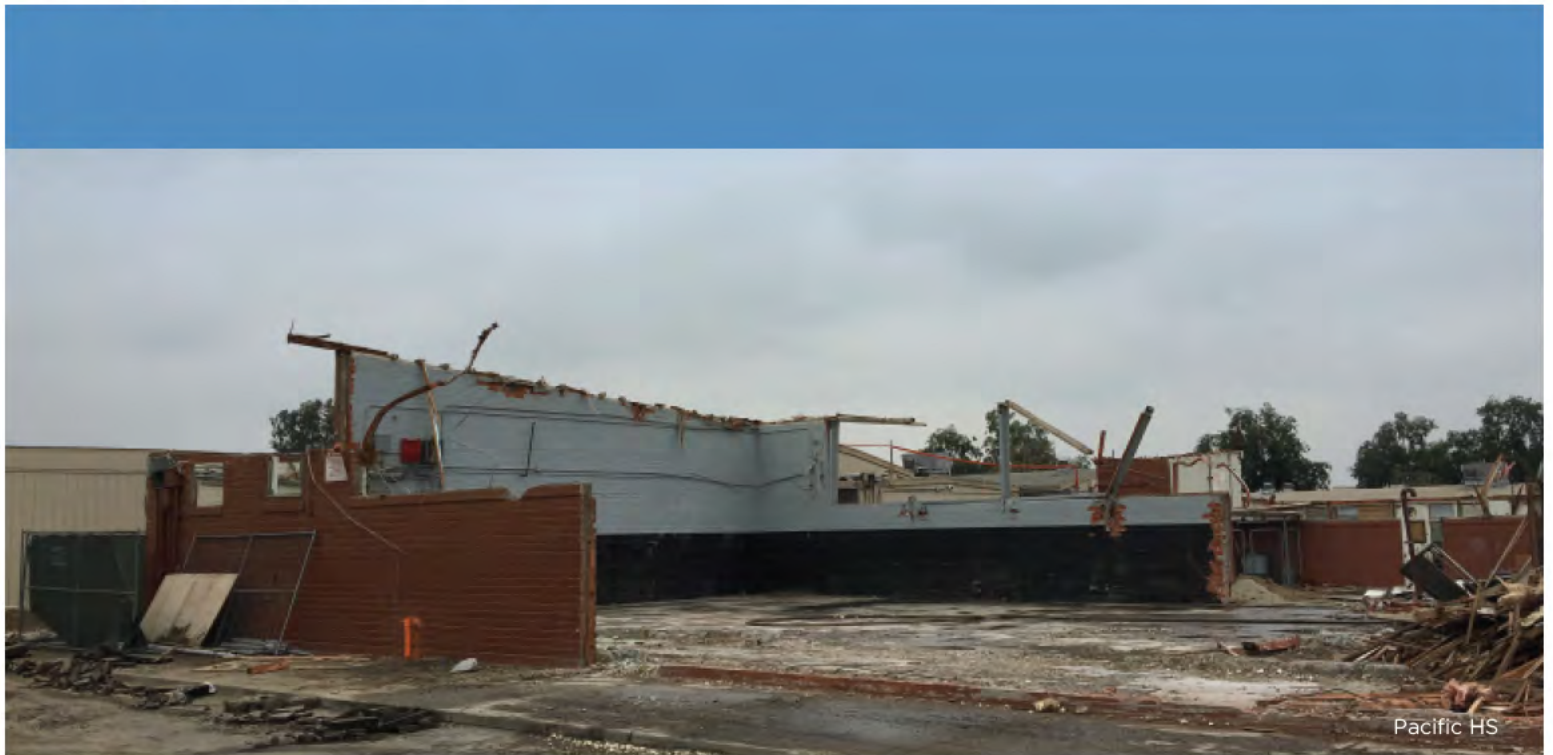
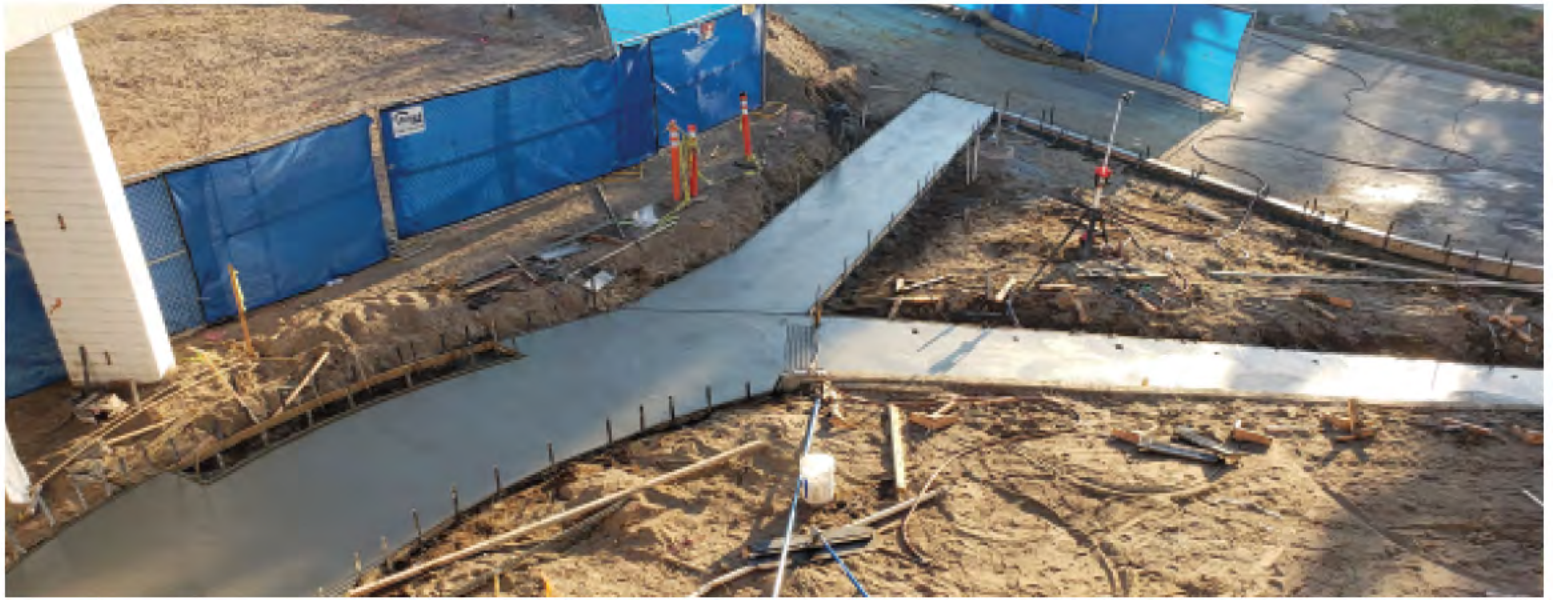
Barton ES	Del Rosa ES	North Park ES
Rio Vista ES	Martin Luther King MS	Shandin Hills MS
Cole ES	Hunt ES	Oehl ES
Warm Springs ES	Serrano MS	Sierra HS

Other Projects at the follow locations:

Projects:	Location:
Athletic Complex Upgrades	Arroyo Valley, Indian Springs, Pacific, San Bernardino HS's
Performing Arts Center	Indian Springs HS
Administration/Library Remodel	Muscoy ES
Portable Removal	Marshall ES
Transportation CTE	Pacific HS
Single Point Entry Modifications	Lytle Creek, Newmark ES's
Departmental Costs	Facilities Planning & Development

These projects are in various stages from planning to waiting for Division of the State Architect approval to construction. The costs associated with these projects are reflected in the graph on page 8.





Bond Spending by Project Type and Issuance - cont.

Measure N

During the same period the Measure N funds were spent on the following types of projects:

Modernizations projects at the following locations:

Barton ES	Serrano MS	Pacific HS
Warm Springs ES	Del Rosa ES	North Park ES
Bradley ES	Shandin Hills MS	ES Sierra HS
Martin Luther King MS	Hunt ES	Oehl ES
Cole ES		

Other Projects at the follow locations:

Projects:	Location:
Athletic Complex Upgrades	Arroyo Valley, Cajon, Indian Springs, Pacific, San Bernardino HS's
Amazon CTE	Cajon HS
Manufacturing CTE	Indian Springs HS
Canopy Repair	Indian Springs HS
Transportation CTE	Pacific HS
Welcoming Resource Center	
Building M Transformation	San Bernardino HS
Security Site Upgrades	Anton, Belvedere, Eliot, Fairfax, Golden Valley, Harmon, Maintenance & Operations, Muscoy, Newmark, North Park, North Verdemont, Oehl, Parkside, SAGES, Salinas, San Andreas, Serrano, Thompson, Urbita, Vermont, Warm Springs and The WHAA
AECom	Program management

These projects are in various stages from planning to waiting for Division of the State Architect approval to construction. As costs are identified they may be allocated to more than one funding source. As a result projects will be shown in both Measure T and Measure N expenditures.



Bond Spending by Account Type

Project Key

NEW = New Campus

SDC = Special Day Classroom

MOD = Modernization

KIT = Kitchen

ADD = Addition

GP = Growth Portables

MU = Multi-Use Room

The Office of Public School Construction has three main account types that expenditures can be reported under, Site, Planning and Construction. The chart below demonstrates the amount of Measure T funds that were spent within the three categories, along with a breakdown of the type of expenditure included in each category.

Site

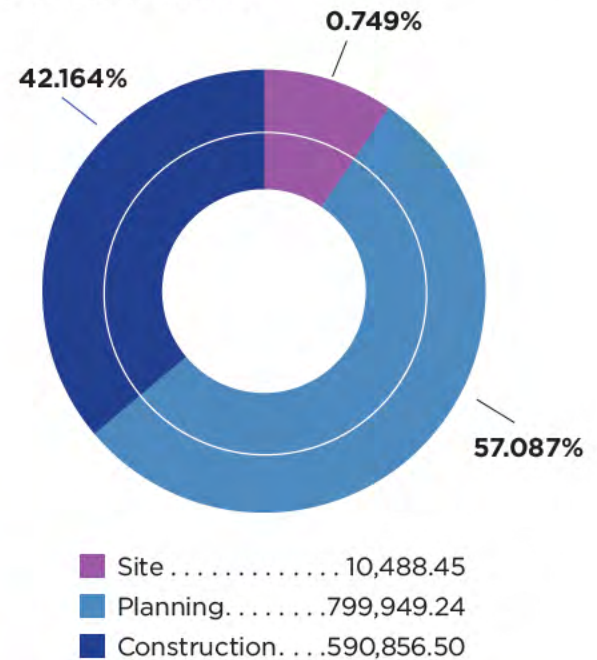
Survey Costs	10,100.00	0.721%
Other Site Costs	388.45	0.028%

Planning

Architect/Engineering Fees	752,959.27	53.733%
Energy Analysis	8,123.75	0.580%
Other Costs	38,866.22	2.774%

Construction

Other Construction	535,399.35	38.208%
Inspections	29,328.00	2.091%
Construction Test	26,129.15	1.865%
Grand Total	1,401,294.19	





Cajon HS CTE

Bond Spending by Account Type - cont.

The Office of Public School Construction has three main account types that expenditures can be reported under, Site, Planning and Construction. The chart below demonstrates the amount of Measure N funds were spent within the three categories, along with a breakdown of the type of expenditure included in each category.

Site

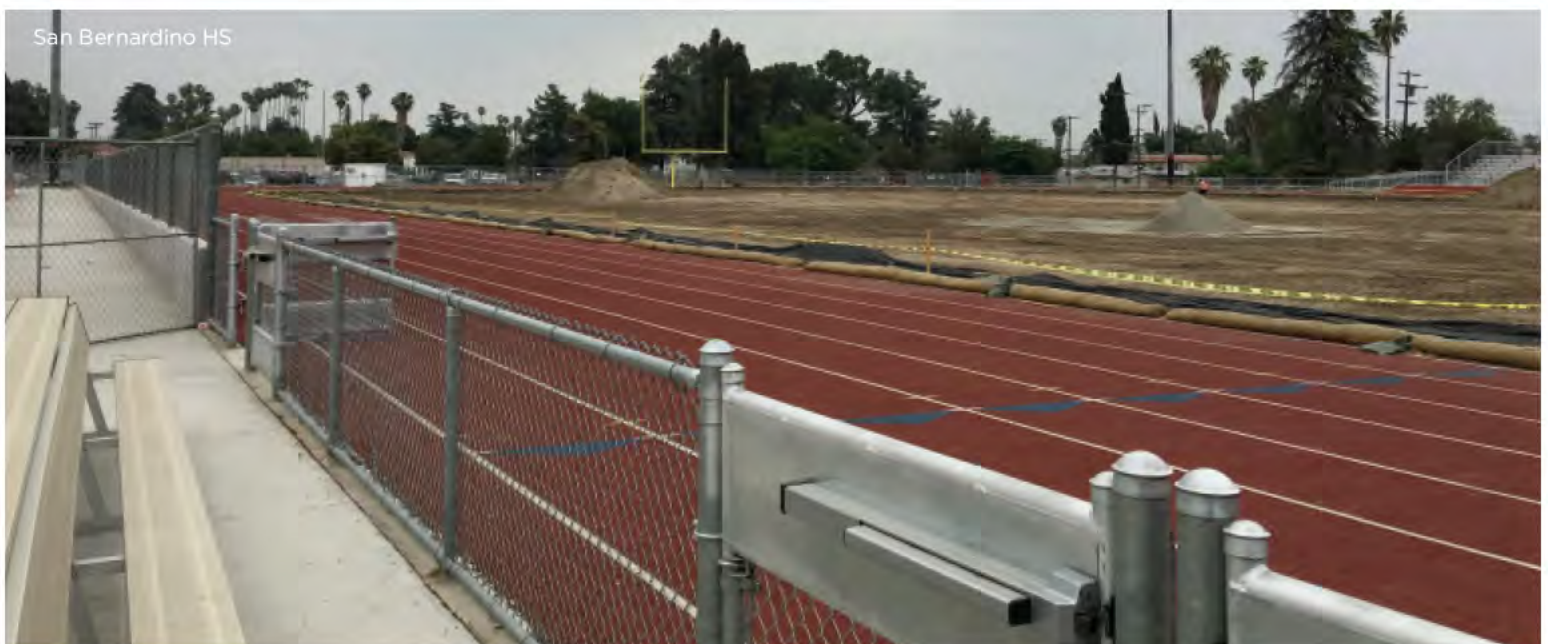
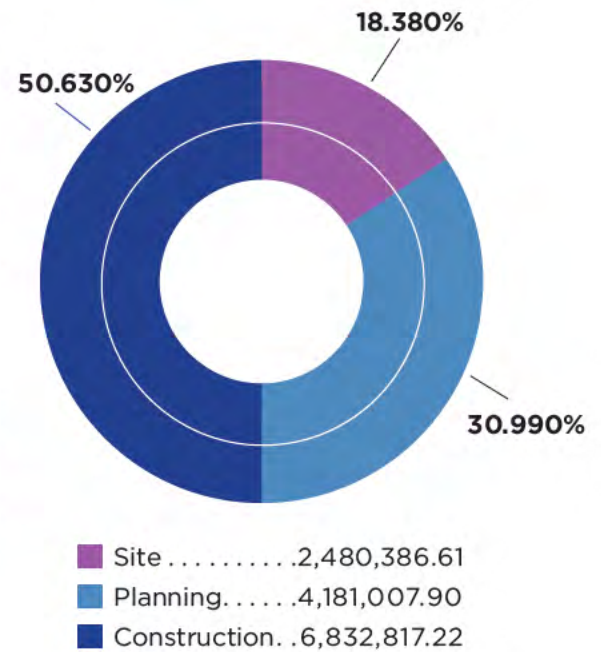
Purchase Price	2,366,075.00	17.530%
Survey Costs	73,900.00	0.550%
Site Support Costs	3,600.00	0.030%
Hazardous Waste Removal	31,637.61	0.230%
Other Site Costs	5,174.00	0.040%

Planning

Architect/Engineering Fees	2,688,219.22	19.920%
DSA Fees	479,935.49	3.560%
CDE Fees	1,120.00	0.010%
Other Costs	1,011,733.19	7.500%

Construction

Main Construction	51,871.87	0.38%
Demolition	739,005.00	5.480%
Other Construction	5,965,028.73	44.200%
Inspections	30,376.00	0.230%
Construction Test	32,925.55	0.240%
Furniture & Equipment	13,610.07	0.100%
Grand Total	13,494,211.73	





Signature Beam

Northpark

Locations of Major Construction Projects



The Board of Education

Mrs. Gwendolyn Rodgers, President
 Dr. Scott Wyatt, Vice President
 Dr. Barbara Flores
 Mr. Michael J. Gallo
 Dr. Margaret Hill
 Mr. Danny Tillman

Interim Superintendent

Dr. Harold J. Vollkommer

District Facilities, M&O Administrators

Joe Aceto, Administrator of Operations
 Thomas Pace, Facilities Director

Facilities Program Management Team

AECOM
 Keith Kajiya, AECOM/URS Vice President

Published April 2020