

San Bernardino City Unified School District

**PROPOSITION 39
ENERGY EFFICIENCY UPGRADES
EEP3**

**793 North E St, San Bernardino,
CA 92410**

**PHASE 2 & PHASE 3
ADDENDUM 05**

February 26, 2019

Prepared By

**JOHN SERGIO FISHER & ASSOCIATES
5567 Reseda Blvd., Suite 209, Los Angeles, CA 91356
(818) 344-3045; FAX (818) 344-0338**

ADDENDUM 5

To: All bidders
From: John Fisher, AIA, Principal
Project: SBCUSD Proposition 39 Energy Efficiency Upgrades EEP3
Phase 2 & Phase 3- Energy Upgrades
Date: February 26, 2019

NOTICE TO BIDDERS

This Addendum forms a part of the Contract and modifies the original documents. It is intended that all work affected by the following modifications shall conform with related provisions and general conditions of the contract of the original drawings and specifications. Modify the following items wherever appearing in any drawing or sections of the specifications. Acknowledge receipt of Addendum No. 5 in the space provided on the Bid Form. Failure to do so may subject bidder to disqualification.

GENERAL ITEMS

1. Take note of the Note #3 on each Prop 39 EEP3 project cover sheet G0-01

3. DIMENSION & CONDITIONS AT THE JOB SITE SHALL BE VERIFIED BY THE CONTRACTOR(S) BEFORE PROCEEDING WITH THE WORK. DISCREPANCIES IN THE DRAWINGS OR BETWEEN THE DRAWING AND ACTUAL FIELD CONDITIONS SHALL BE REPORTED TO THE ARCHITECT. CORRECTED DRAWINGS OR INSTRUCTIONS SHALL BE ISSUED BY THE ARCHITECT PRIOR TO THE INSTALLATION OF ANY WORK.

2. RFIs Questions & Answers – see attachment (3 pages)

DRAWINGS

3. Bid Package # 1 (Phase 2) – HVAC Cajon High School - Revisions
Sheet G0-02, M1-02 & M1-11, Delta 1 Revision per DSA comments.

End of Addendum

RFIs QUESTIONS & ANSWERS

A. PROP 39- BID PACKAGE 1 – HVAC (PHASE 2) & BID PACKAGE 2 – ELECTRICAL (PHASE 3)

QUESTIONS & ANSWERS:

1. Should a bidder bid on both phases?

It is allowable to bid both Packages if the contractor holds the required licenses.

Bidders may either check box for Package 1 and submit only a bid for HVAC scope-of-work; OR may check box for Package 2 and submit only a bid for Electrical scope-of-work; OR if the bidder holds all required licenses they may check both boxes and submit one bid form. Important note, Package 1 and 2 will be awarded separately to the lowest apparent bidder for each.

2. They also ask if they teamed up with a mechanical contractor, shall they bid both phases as 1 package?

It is allowable to bid both Packages if a contractor and their subcontractor holds the required licenses.

To recap the above response, bidders may either check box for Package 1 and submit only a bid for HVAC scope-of-work; or may check box for Package 2 and submit only a bid for Electrical scope-of-work; or if two (2) qualified contractors (i.e. contractor/subcontractor) bid Package 1 and Package 2 they will check both boxes and submit one bid form. Important note, Package 1 and 2 will be awarded separately to the lowest apparent bidder for each.

3. If it's 2 bids, shall we be with 2 bonds?

If a contractor is the apparent low bidder for both Package 1 and 2, only one (1) bond is required to cover the cost and scope-of-work for HVAC and Electrical (Packages 1 and 2). Moreover, if a contractor is bidding both packages and received notification they were the apparent low bidder for only one package, then a bond will only be required for that package.

B. PROP 39 - BID PACKAGE 1 – HVAC (PHASE 2)

QUESTIONS & ANSWERS:

4. Phase 2 San Geronio High School mechanical drawing sheet M3-02, Detail #2, (N) concrete pad verses scope of work (E) concrete pad clarification:

During the DSA back check, (N) concrete pad is required per DSA plan checker. Please demo the (E) equipment concrete pad and build a (N) equipment concrete pad which shall be 1 foot greater than the new equipment foot print.

C. PROP 39- BID PACKAGE 2 – ELECTRICAL (PHASE 3)

QUESTIONS & ANSWERS:

ALL ANSWERS ARE BASED ON THE PROJECT ADDENDUM 3 – DRAWINGS SHOW CHANGES AS ADDENDUM 1 TO THE INDIVIDUAL PROJECT.

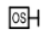
5. **After the first interior page E5-02 of Arroyo Valley, I noticed a few of the fixtures (N1, N2, RD, WK, etc.) are labelled but are not called out on the fixture schedule. Are we to assume these fixtures and any others that are labelled but do not appear on the fixture schedule are not being touched?** NI, N2, RD, WK are all in Lighting fixtures schedule E0-02.
6. **The exterior layout page E5-01 has no fixture labels (same with the other 2 schools). The only school that matches the fixture schedule appears to be San Bernardino HS. Are we only doing exterior fixtures at that SBHS?**
All lighting fixtures on E5-01 are labeled.
7. **Also on page E5-02, fixture label M is called out for round downlight retrofits, but it appears to be on square fixtures as well. Was this a mislabel, or are we retrofitting the existing square canopies?** On E5-02, all fixtures labeled as "M" are round. None of the "M" fixtures are shown as square.
8. **There is no emergency called out, so is there a backup generator that powers the fixtures or do we need to put an allowance in there for emergency?**
See keyed Note # for emergency battery pack.
9. **Based on the keyed notes for Cesar Chaves, are the emergency fixtures already connected to an emergency backup generator and we are simply adding a Wattstopper ELCU-200 to the emergency fixture?**
We are not running new emergency generator lighting circuits. The drawings are showing existing light fixtures connected to generator or Inverter that they have to provide ELCU-200. If the note shows provide emergency battery pack built in or bodine battery pack then it is new as shown.
10. **And for the other 3 schools, are we running new power to the emergency fixtures from the switch, or are these already powered? If we are running new power, where are the switches located, because we need that information to properly estimate the amount of #12awg wire needed to run it.**
Switches can be assumed to be located by the door entrance of the room
11. **Also, are we to assume every emergency fixture needs this, or just those with keyed note 3? (For example, on page E5-02 on Arroyo Valley, the RAAE labelled fixtures in the middle of the large open room do not have a key note 3, so we will assume those already have emergency power).**
RAAE lighting fixtures shall be under Keyed note number 3.
12. **Are we to assume all ceilings are drop tile (T-grid) for the sake of simplicity for running new low voltage for dimming switches and ceiling sensors?**
No, as per Specification Section 1.02 (C) and (E), and Section 1.04 (F), contractor must verify ceiling types.

13. On Cesar Chavez page E0-01, a note was amended to Extend conduit and wire for ceiling occ sensors. Are there specific locations this note affects, because everything appears to be T-grid and thus would not require wire mold or conduit runs (unless there were locations of hard lid ceilings).

Majority of the Classrooms and Offices are T-grid ceilings. Contractor to verify rooms such as Storage, Closets, Restrooms etc ceiling type.

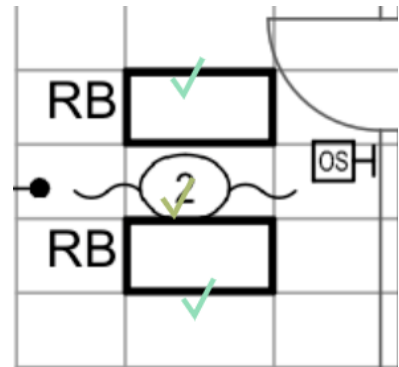
14. Additionally, the note below is on the second page of all the plan sets for wall occ sensors. Where it is not labeled “ab” next to this sensor (indicating 2 pole switching), are we required to make the room 2 pole even if it is not existing?

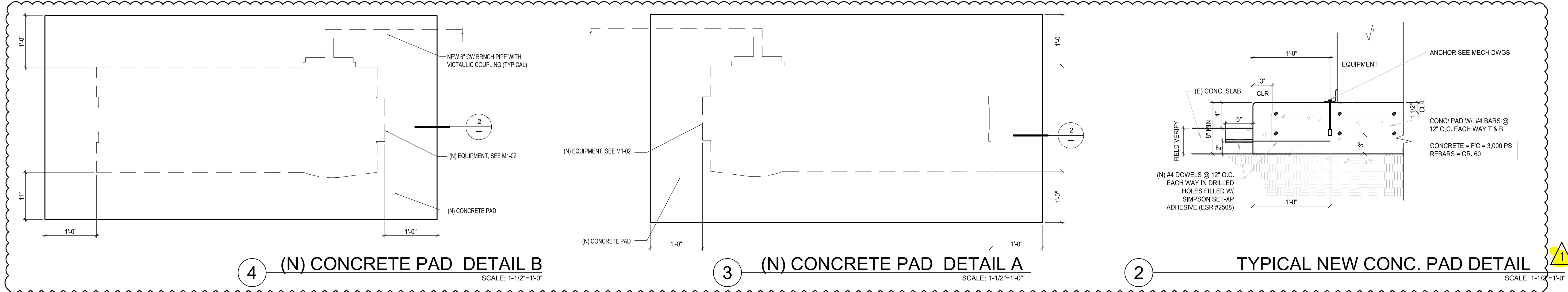
For existing small rooms with Single Pole Switch, use single pole occ sensor. Big rooms with existing Two Pole Switch, use two pole occ sensor.

 NEW WALL MOUNT LIGHTING OCCUPANCY SENSOR. PROVIDE ONE CIRCUIT FOR SINGLE LIGHTING FIXTURE. PROVIDE TWO CIRCUITS FOR TWO OR MORE LIGHTING FIXTURES.

15. Per the photo (at the right) of an office in Pacific High School, are we to just count this as a single pole since it does not say ab? Or do we need to make this into a 2 pole switching office?

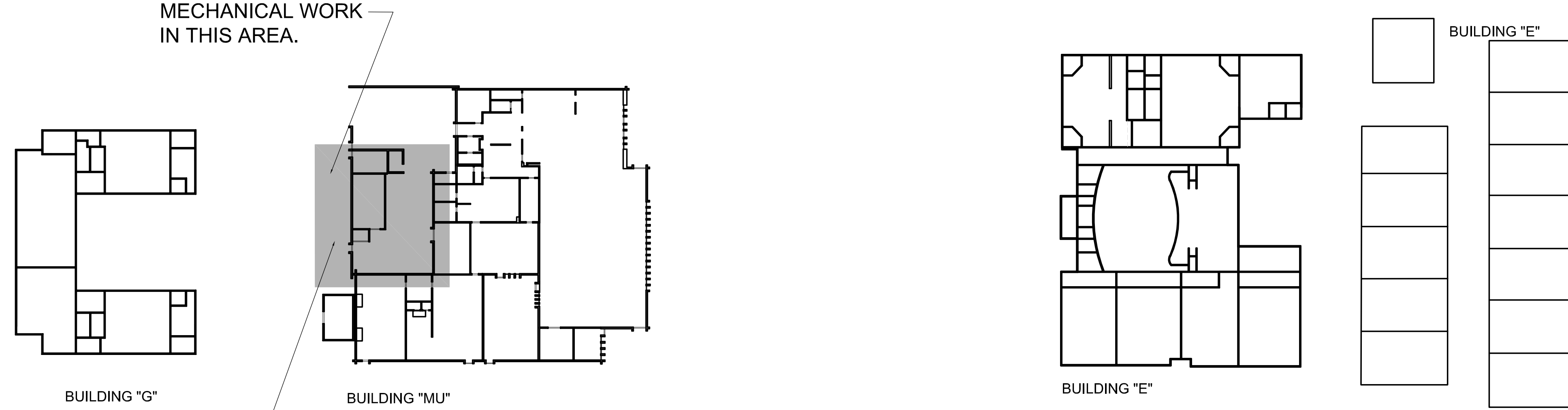
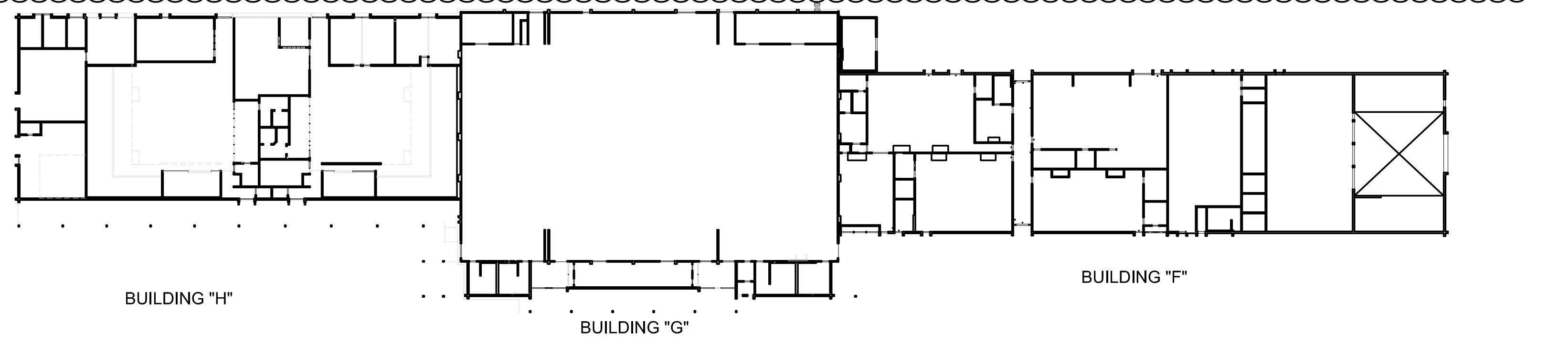
The photo is small room; this requires Single Pole occ sensor. Please field verify what is existing.





LEGEND

NOTE: V.I.F. ALL DIMENSIONS

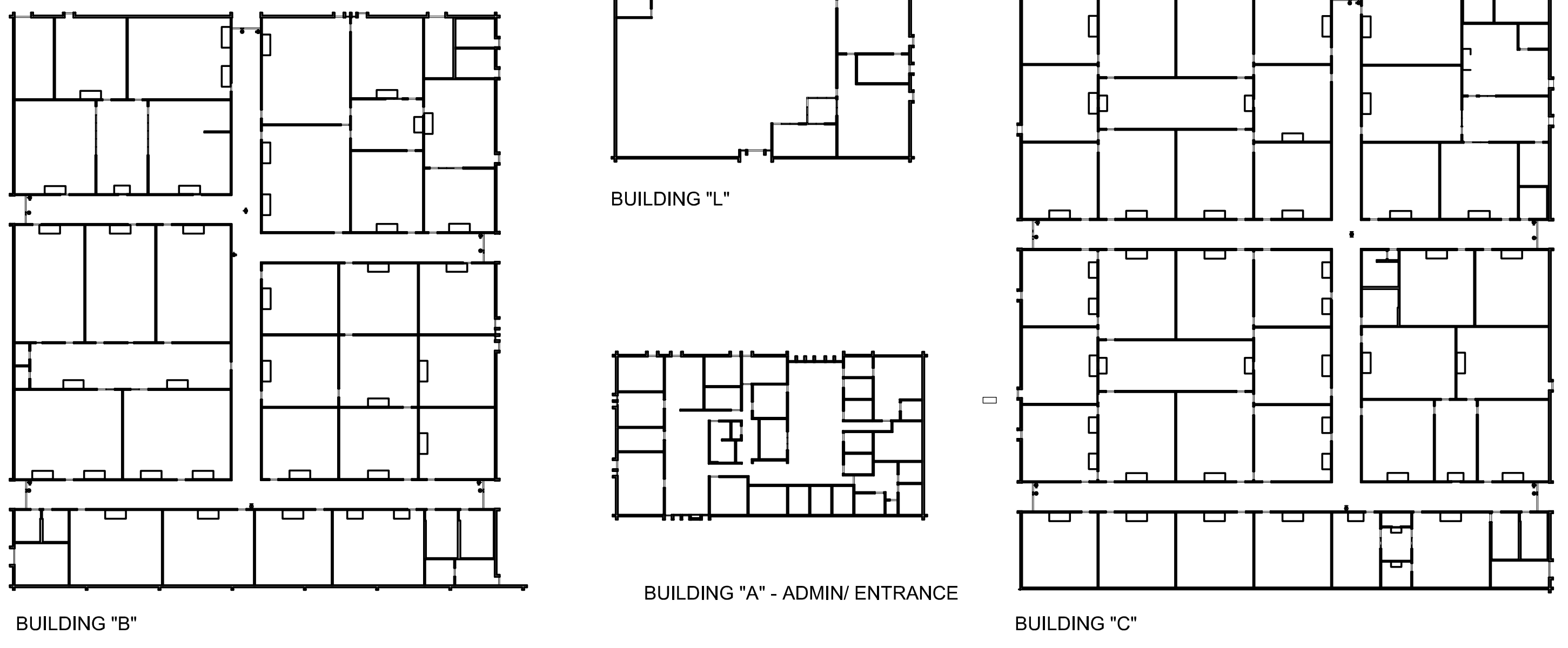


REMOVE EXISTING CHAIN LINK FENCE WHEN DEMO OF CH-1 OCCURS AND INSTALL NEW CHAIN LINK FENCE AFTER NEW CH-1 IS COMPLETE- SEE SPEC.

NEW CHILLER (CH-1) TO FIT ON NEW CONC. PAD, SEE DETAIL#2

REMOVE 2 EXISTING CONDENSER WATER PUMPS, DEMO 2 EXISTING CONC. PADS, REPLACE WITH NEW PUMPS P3 & P4, ON (N) CONC. PADS --DETAIL #2

SEE MECH. DRAWING SHEET M1-02 FOR SCOPE



1 SITE KEYPLAN NOT TO SCALE

SUBMITTALS:		
NO.	DESCRIPTION	DATE
1	ADDENDUM #1	01/10/19

The enclosed drawings, designs, ideas and arrangements, as contracted with their clients and consultants, are and shall remain the property of John Sergio Fisher & Associates Inc. No part thereof shall be copied, disclosed to others, or used in connection with any other work or project without the written consent of the above. Visual contact with these prints shall constitute conclusive evidence of these restrictions.

John Sergio Fisher & Associates Inc.
5567 Reseda Blvd #209
Tarzana California 91356
(818) 344-3045
fax (818) 344-0338
E-mail: mail@jsfarchs.com
Architecture & Planning
John Fisher AIA

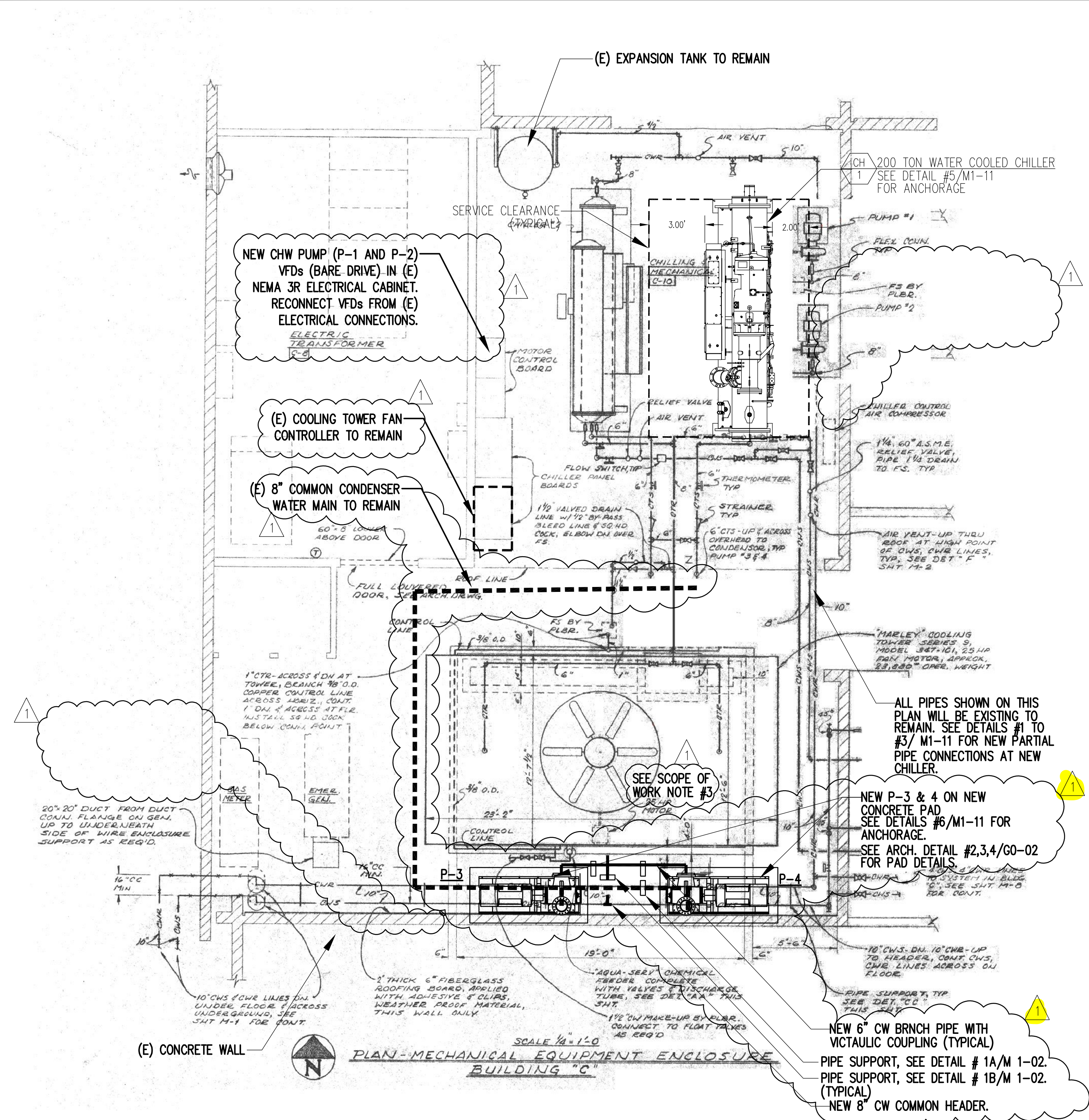
jsfa

	IDENTIFICATION STAMP DIVISION OF THE STATE ARCHITECT OFFICE OF REGULATION SERVICES	
	FILE # 36-H7 APPL: 04-117575	AC: F/L S SS DATE:

KEY PLAN

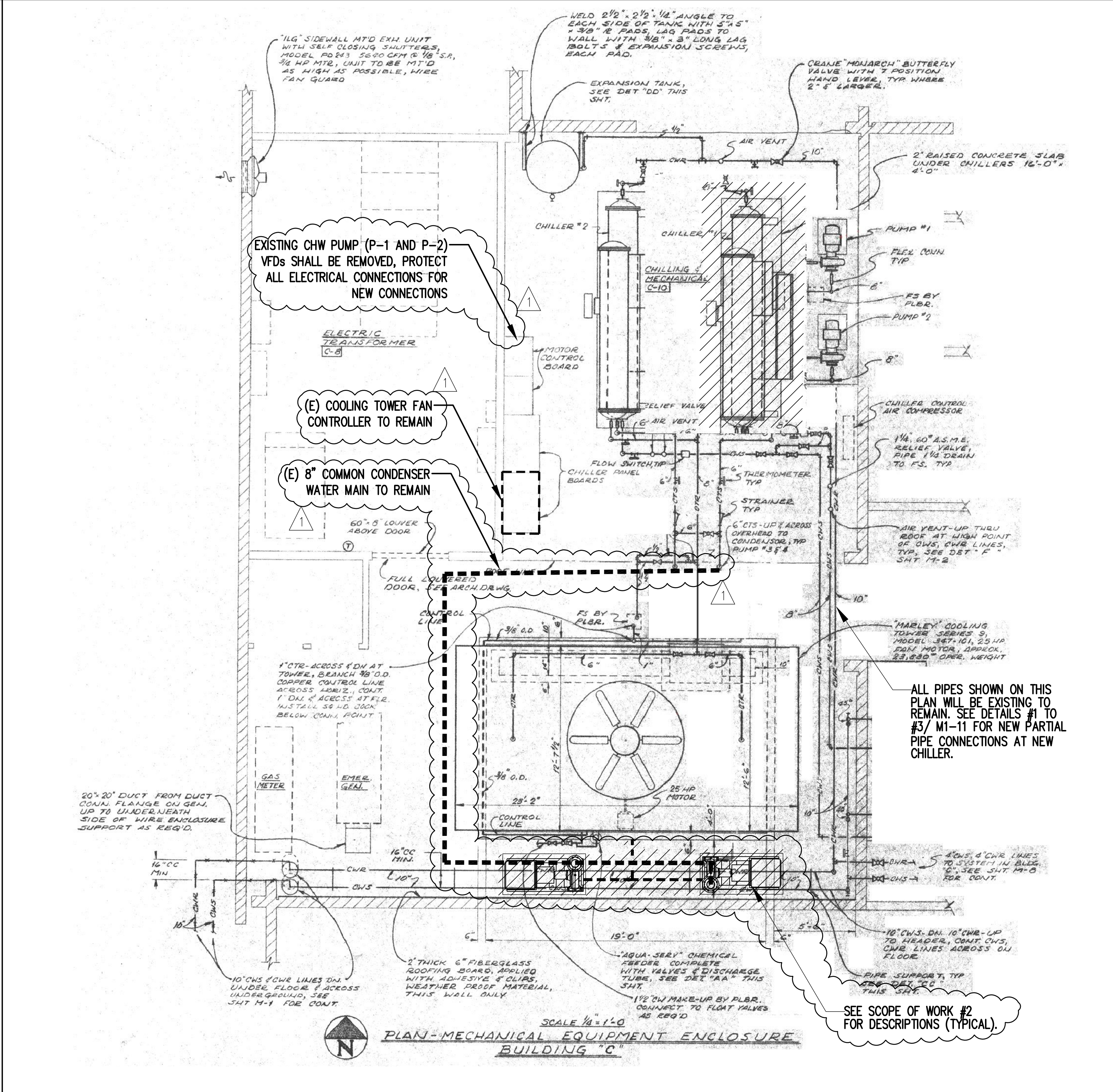
Client:
SAN BERNARDINO CITY UNIFIED SCHOOL DISTRICT
PROP 39 ENERGY PROJECTS
Job Name:
**CAJON HIGH SCHOOL
ENERGY MODIFICATIONS**
1200 W HILL DRIVE
SAN BERNARDINO, CA 92407
Drawing Title
SITE KEYPLAN AND DETAILS

Project No: 1715
Phase: DSA APPROVAL SET
Date: JANUARY 10, 2019
Scale: AS NOTED
Drawing No:
G0-02

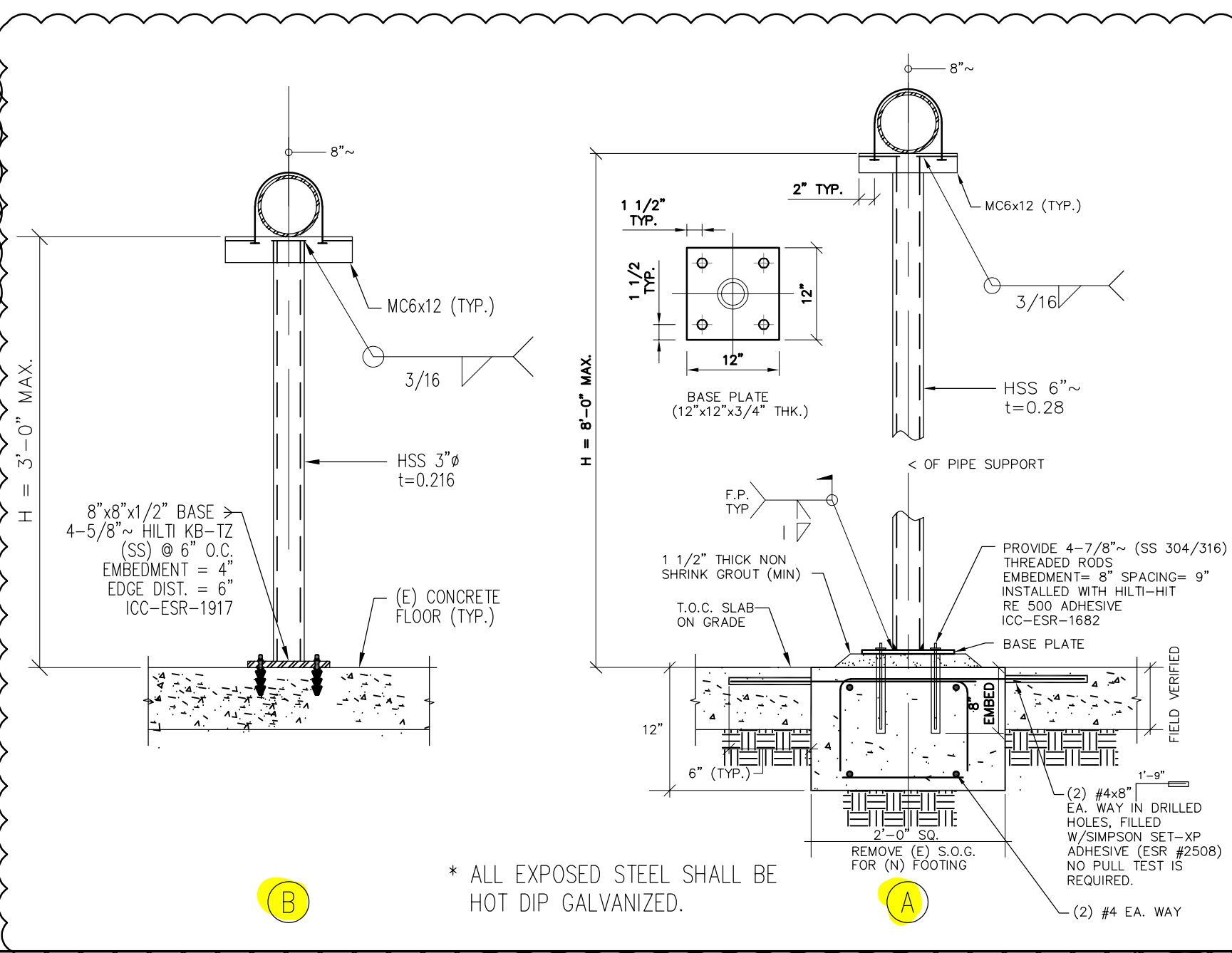


- SCOPE OF WORK:**
1. PROVIDE NEW WATER COOLED-HIGH EFFICIENCY CHILLER ON NEW CONCRETE PAD (PER DETAIL #2/G0-02).
 2. PROVIDE NEW CONDENSER WATER PUMPS, ASSOCIATED ANCHORAGE, AND NEW PARTIAL PIPING UP TO COOLING TOWER SPPLY MAIN AND PARTIAL DISCHARGE PIPING TO ALIGN WITH PUMP DISCHARGE OUTLET, REUSE EXISTING TRIPLE DUTY VALVES AND FLEX CONNECTORS WITH PROVIDE NEW FLANGE CONNECTOR FROM FLEX CONNECTOR TO PUMP DISCHARGE OUTLET, TYPICAL FOR BOTH PUMPS. PROVIDE NEW CONCRETE PADS PER DETAIL #2, 3, 4/G0-02. ADJUST (E) ELECTRICAL CONDUIT TO MISS THE NEW PAD. SEE DETAIL A & B IN #1/M 1-02 FOR PIPE SUPPORTS.
 3. REPLACE (E) MESH SCREEN INSIDE COOLING TOWER WITH NEW TWO LAYERS OF SCREEN. CONTACT COOLING TOWER MANUFACTURE TO PROVIDE THE MESH SCREEN AS RECOMMENDED BY MANUFACTURE.

		PUMPS	
TAG		P-3	P-4
SERVICE		CONDENSER WATER PUMP	CONDENSER WATER PUMP
LOCATION		COOLING TOWER YARD	COOLING TOWER YARD
TYPE		CENTRIFUGAL DOUBLE SUCTION, SPLIT CASE	CENTRIFUGAL DOUBLE SUCTION, SPLIT CASE
DESIGN BASE MANUFACTURER & MODEL		BELL & GOSSETT VSX-VSC5, 5x6x10.5B	BELL & GOSSETT VSX-VSC5, 5x6x10.5B
GPM		1260	1260
HEAD (FT)		45	45
% EFF.		72.6	72.6
WATER TEMP (°F)		68	68
BHP		19.6	19.6
MOTOR	HP	25	25
	V-φ-Hz	460/3/60	460/3/60
	RPM	1800	1800
OPERATING WEIGHT (LBS)		1530	1530
REFERENCE ANCHORAGE DETAIL		#6/M 1-11	#6/M 1-11
REFERENCE CONTROL DETAIL		M 1-21	M 1-21
REMARKS		• PROVIDE TEFC MOTOR. • PROVIDE LEFT HAND ROTATION.	• PROVIDE TEFC MOTOR. • PROVIDE RIGHT HAND ROTATION.



- SCOPE OF WORK:**
1. REMOVE (E) WATER COOLED CHILLER AND ASSOCIATED CONCRETE PAD.
 2. REMOVE (E) CONDENSER WATER PUMPS, ASSOCIATED SUCTION DIFFUSERS, CONCRETE PAD, ANCHORAGE, AND PARTIAL PIPING UP TO COOLING TOWER SUPPLY MAIN AND PARTIAL DISCHARGE PIPING UP TO THE EXISTING BRANCH ELBOW AFTER THE TRIPLE DUTY VALVE. EXISTING TRIPLE DUTY VALVE AND FLEX CONNECTOR SHALL BE TEMPORARY REMOVED, PROTECTED AND REUSE FOR NEW INSTALLATION. FLEX CONNECTORS AND ELECTRICAL WIRING & CONDUIT SHALL BE REMAINED, PROTECTED AND REUSED.



LEGEND

John Sergio Fisher & Associates Inc. Mechanical Engineers
1106-B W. MAGNOLIA BLVD., BURBANK, CA 91506
(818) 840-0280 FAX(818) 840-0284

SUBMITTALS:

NO.	DESCRIPTION	DATE
1	ADDENDUM #1	01/10/19

The enclosed drawings, designs, ideas and arrangements, as contracted with their clients and consultants, are and shall remain the property of John Sergio Fisher & Associates Inc. No part thereof shall be copied, disclosed to others, or used in connection with any other work or project without the written consent of the above. Visual contact with these prints shall constitute conclusive evidence of these restrictions.

John Sergio Fisher & Associates Inc. 5567 Reseda Blvd #209 Tarzana California 91356 (818) 344-3045 fax (818) 344-0338 E-mail: mail@jsfarchs.com Architecture & Planning John Fisher AIA

IDENTIFICATION STAMP
DIVISION OF THE STATE ARCHITECT
OFFICE OF REGULATION SERVICES

FILE # 36-47
APPL: 04-117575
AC: FLS SS
DATE:

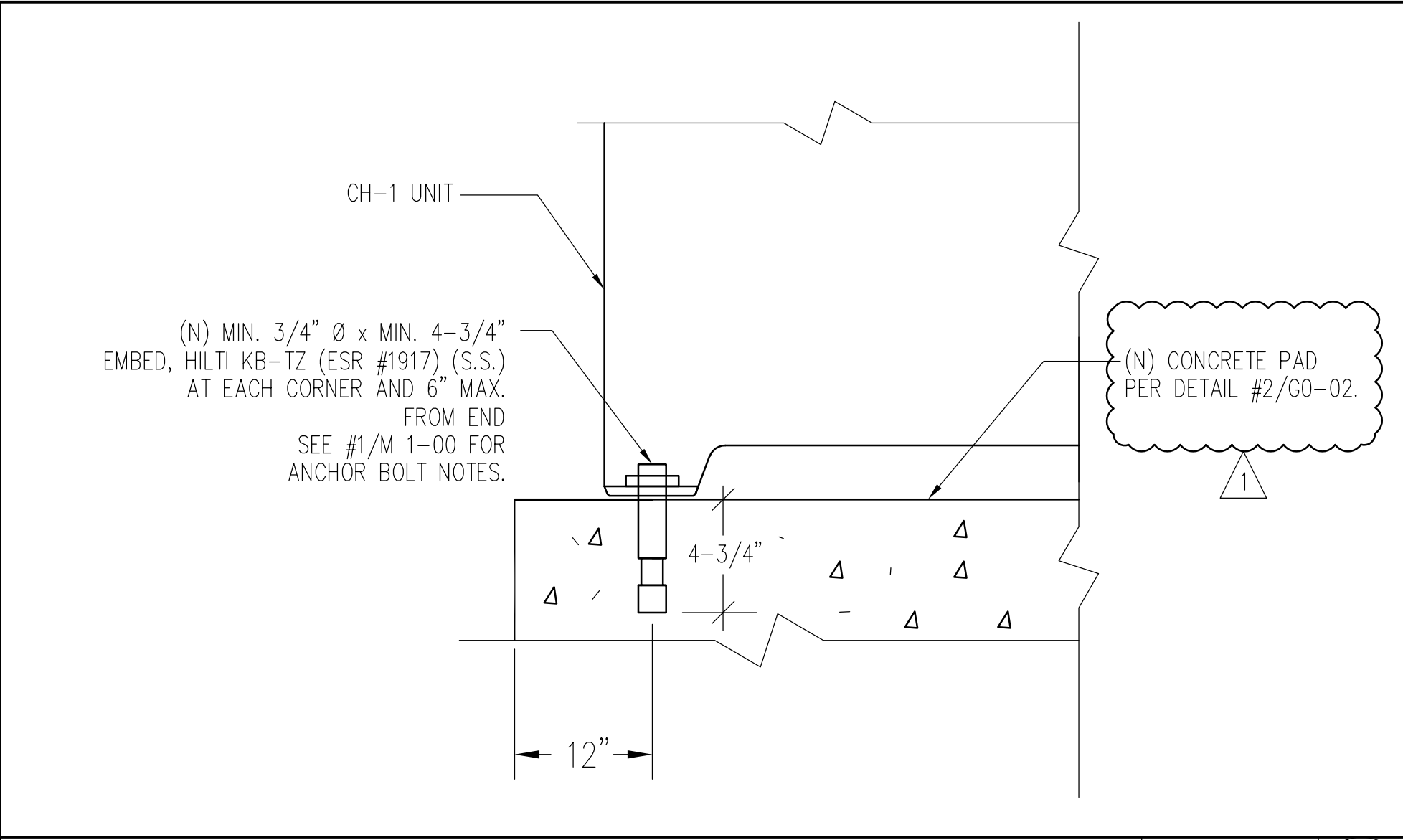
KEY PLAN

Client: SAN BERNARDINO CITY UNIFIED SCHOOL DISTRICT
Job Name: PROP 39 ENERGY PROJECTS
Job Name: CAJON HIGH SCHOOL ENERGY MODIFICATIONS
1200 W HILL DRIVE SAN BERNARDINO, CA 92407 Drawing Title

ENLARGED MECHANICAL ROOM DEMOLITION & NEW FLOOR PLANS

Project No: 1715
Phase: DSA APPROVAL SET
Date: JANUARY 10, 2019
Scale: 1/4" = 1'-0"

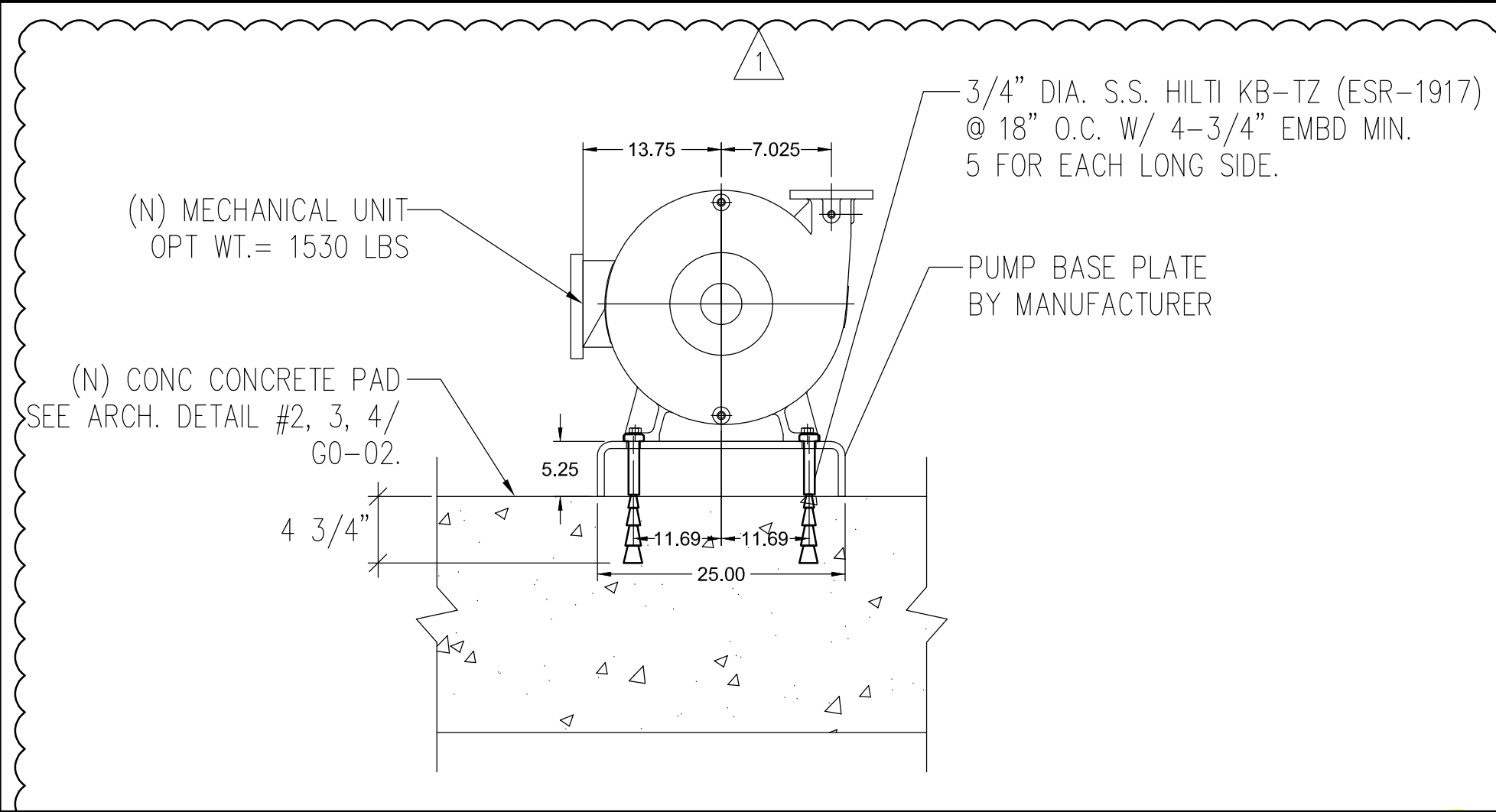
Drawing No: M 1-02



CH-1 ANCHORAGE DETAIL

SCALE: NONE

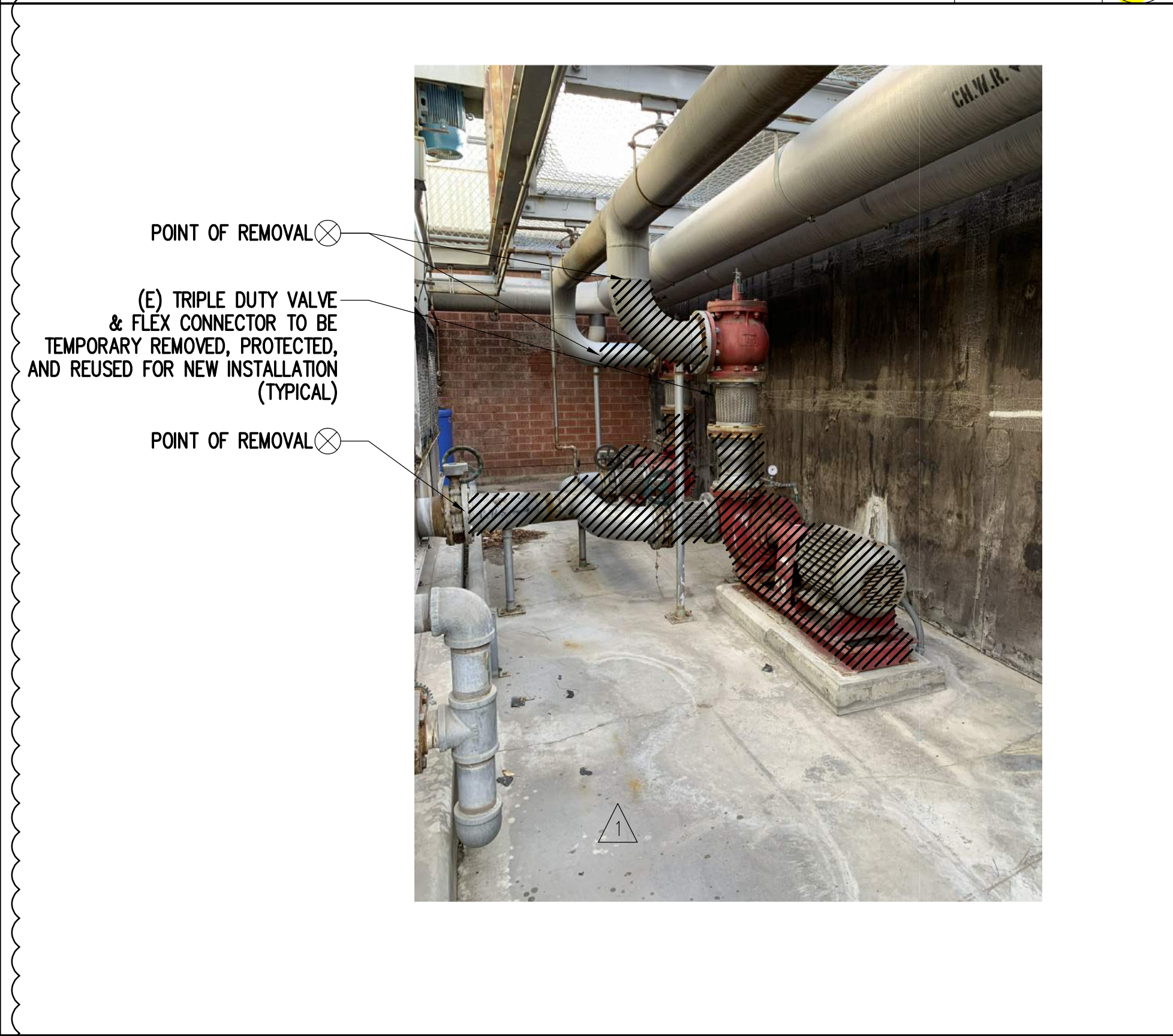
5



CONDENSER WATER PUMP ANCHORAGE (P-3 & 4)

SCALE: NONE

6



CONDENSER WATER PUMP PIPES

SCALE: NONE

7



1. FOR EXISTING CHILLED WATER PIPES REMOVAL, REMOVE EXISTING FLEX CONNECTOR AND PARTIAL PIPING UP TO SHUT OFF VALVES.
2. FOR NEW CHILLED WATER PIPES CONNECTION, PROVIDE NEW FLEX CONNECTOR AND PARTIAL PIPING FROM NEW CHILLER TO SHUT OFF VALVES. MATCH INSULATION OF THE NEW PIPING WITH EXISTING TYPE.
3. RECOMMEND TO REMOVE THE EXISTING CHAIN LINK FENCE TEMPORARILY FOR EXISTING CHILLER DEMOLITION WORK.

POR & POC FOR CHILLED WATER PIPES

SCALE: NONE

3



NEW VFD LOCATION FOR (E) CHW PUMPS

SCALE: NONE

4



1. FOR EXISTING CONDENSER WATER PIPES REMOVAL, REMOVE EXISTING FLEX CONNECTOR AND PARTIAL PIPING UP TO SHUT OFF VALVES.
2. FOR NEW CONDENSER WATER PIPES CONNECTION, PROVIDE NEW FLEX CONNECTOR AND PARTIAL PIPING FROM NEW CHILLER TO SHUT OFF VALVES.

POR & POC FOR CONDENSER WATER PIPES

SCALE: NONE

1



POR & POC FOR CHILLED WATER PIPES

SCALE: NONE

2

LEGEND

MAROKO & SHWE, INC.
Mechanical Engineers
1106-B W. MAGNOLIA BLVD.,
BURBANK, CA 91506
(818) 840-0280 FAX(818) 840-0284

SUBMITTALS:		
NO.	DESCRIPTION	DATE
1	ADDENDUM #1	01/10/19

The enclosed drawings, designs, ideas and arrangements, as contracted with their clients and consultants, are and shall remain the property of John Sergio Fisher & Associates Inc. No part thereof shall be copied, disclosed to others, or used in connection with any other work or project without the written consent of the above. Visual contact with these prints shall constitute conclusive evidence of these restrictions.

John Sergio Fisher & Associates Inc.
5567 Reseda Blvd #209
Tarzana California 91356
(818) 344-3045
fax (818) 344-0338
E-mail: mail@jsfarchs.com
Architecture & Planning
John Fisher AIA

IDENTIFICATION STAMP
DIVISION OF THE STATE ARCHITECT
OFFICE OF REGULATION SERVICES

FILE # 36-H7
APPL: 04-117575
AC: _____ F/L: _____ SS
DATE: _____

KEY PLAN

Client:
SAN BERNARDINO CITY UNIFIED SCHOOL DISTRICT

PROP 39 ENERGY PROJECTS

Job Name:
**CAJON HIGH SCHOOL
ENERGY MODIFICATIONS**

1200 W HILL DRIVE
SAN BERNARDINO, CA 92407
Drawing Title

Project No: 1715

Phase: DSA APPROVAL SET

Date: JANUARY 10, 2019

Scale: NOT TO SCALE

Drawing No:
M 1-11

DETAILS