



San Bernardino City Unified School District Facilities Management Department

Pacific High School

SDC Addition (C63)



Project Information

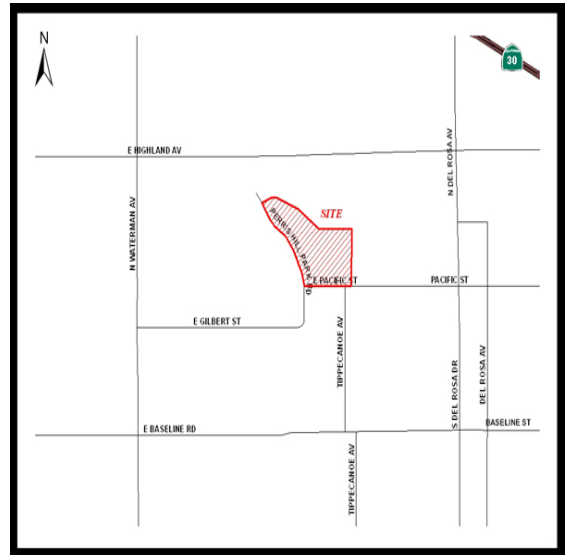
Seats	36
General Classrooms	5
Site	acres
Construction	7,272 sq.ft.
Owner Representative	
Construction Manager	Neff
Architect	HMC
Project Cost Estimate	\$3,165,115.00

Schedule

Construction Start	
Construction Finish	

Spaces for the special education program include Special Education Classrooms, a room for the Resource Specialist, specially equipped classrooms where applicable, as well as those in other units such as speech and medical therapists, psychologist, counseling offices and conference area. Spaces include showers, kitchen, washer, dryer, and microwave.

Vincinity Map



To view photos of this project, or to learn more about SBCUSD Facilities programs, please visit us at <http://www.sbcusdfacilities.com>.