



San Bernardino City Unified School District Facilities Management Department

Oehl Elementary School

Modernization (M32)



General Site: accessible gates, directional signs, re-stripping partial parking lot, accessible ramp.

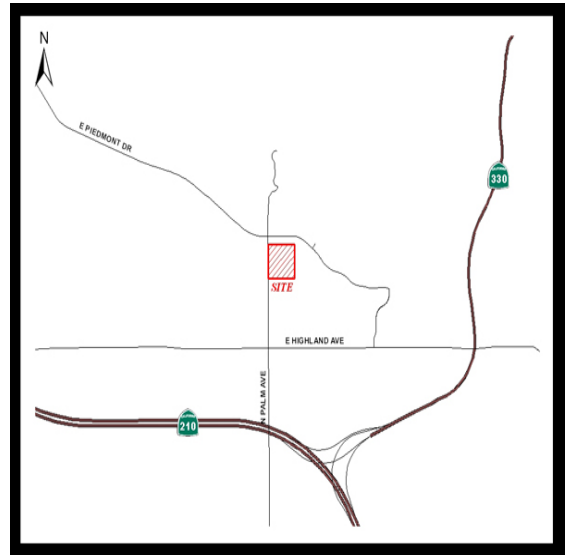
Project Information

Seats	550
General Classrooms	
Site	acres
Construction	32,359 sq.ft.
Owner Representative	
Construction Manager	Vanir
Architect	HMC
Project Cost Estimate	\$3,462,442.00

Schedule

Construction Start	
Construction Finish	

Vicinity Map



To view photos of this project, or to learn more about SBCUSD Facilities programs, please visit us at <http://www.sbcusdfacilities.com>.